

NOVA-7895
Celeron™ (Tualatin), Pentium® III Processor
Multimedia & Dual Ethernet, IEEE1394
Embedded Board
PCB Version 1.0

©Copyright 2002 by ICP Electronics Inc. All Rights Reserved.
Manual Revision 1.1
Sep 01, 2002.

The information in this document is subject to change without prior notice in order to improve reliability, design and function and does not represent a commitment on the part of the manufacturer.

In no event will the manufacturer be liable for direct, indirect, special, incidental, or consequential damages arising out of the use or inability to use the product or documentation, even if advised of the possibility of such damages.

This document contains proprietary information protected by copyright. All rights are reserved. No part of this manual may be reproduced by any mechanical, electronic, or other means in any form without prior written permission of the manufacturer.

Trademarks

NOVA-7895 is a registered trademark of ICP Electronics Inc. IBM PC is a registered trademark of International Business Machines Corporation. Intel is a registered trademark of Intel Corporation. AWARD is a registered trademark of Award Software International, Inc. Other product names mentioned herein are used for identification purposes only and may be trademarks and/or registered trademarks of their respective companies.

Contents

1.Introduction..... 4

- 1.1 Specifications:..... 5
- 1.2 Package Contents..... 8

2.Installation..... 9

- 2.1 NOVA-7895 Layout..... 9
- 2.1 NOVA-7895 Layout..... 10
- 2.2 NOVA-7895 Dimensions (Unit : mm)..... 11
- 2.3 Unpacking Precautions..... 12
- 2.4 Clear CMOS Setup..... 12
- 2.5 COM2 RS-232/422,485 Selection..... 13
- 2.6 COM Port RI and Voltage Selection 13
- 2.8 LCD Panel power Setup 15
- 2.9 LCD Panel Type Selection..... 15
- 2.10 CompactFlash™ Disk Setting..... 16
- 2.11 AT or ATX POWER Setting 16
- 2.12 PC104 PLUS VIO power Setup 17

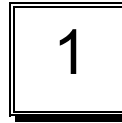
3.Connection 18

- 3.1 Floppy Disk Drive Connector 18
- 3.2 PCI E-IDE Disk Drive Connector..... 19
- 3.3 Parallel Port 20
- 3.4 Serial Ports 21

- 3.5 Keyboard/Mouse Connector 23
- 3.6 External Switches and Indicators 23
- 3.7 USB Port Connector 24
- 3.8 IrDA Infrared Interface Port..... 25
- 3.9 VGA/TV-OUT Connector (CN1/CN38/CN37) 25
- 3.10 LAN RJ45 Connector..... 26
- 3.11 Fan Connector..... 27
- 3.12 Temperature Sensor Connector 27
- 3.13 Audio CD IN..... 28
- 3.14 Audio Speaker OUT (Reserved)..... 28
- 3.15 Audio Panel 28
- 3.16 CompactFlash Storage Card Socket..... 29
- 3.17 Power Connector 30
- 3.18 IEEE1394 Connector 30
- 3.19 Digital Input / Output..... 30
- 3.20 LCD Panel Connector..... 31
- 3.21 PCI 104 PLUS Connector..... 32

4. AWARD BIOS Setup 33

- 4.1 Introduction 33
- 4.2 Starting Setup 33
- 4.3 Using Setup 34
- 4.4 Getting Help..... 35
- 4.5 Main Menu 35
- 4.6 Standard CMOS Setup 38



Introduction

Thank you for purchasing the NOVA-7895 Socket 370 Celeron[®], Pentium III[®] (FC-PGA) with two 10/100Mbps Ethernet ports, VGA, IEEE1394 and Audio Board. It is equipped with a high performance Intel[®] Celeron up to 1.4GHz, Pentium III (FC-PGA) 1 GHz (or above) Processor and an advanced high performance multi-mode I/O, designed for system manufacturers, integrators, or VARs looking to combine excellent performance, reliability and quality at a reasonable price.

This board has a built-in IDE Interface CompactFlash[™] Disk (Type II) for embedded applications. The CompactFlash[™] Disk is 100% compatible with all hard drives. Users can use any DOS command without installing any extra software utility. The Flash Disk is currently available from 128MB to 1GB.

Two advanced high performance LPC super I/O chips – ITE (IT8705F) and NS (NS87366) are used in the NOVA-7895 board. The on-chip UARTs are compatible with NS16C550. The parallel port and FDD interface are compatible with IBM PC/AT architecture.

NOVA-7895 uses the advanced SIS SIS630STT Chipset which is a 100% PCI compatible chipset (PCI 2.1 standard). In addition, this board provides one 168-pin socket for on-board DRAM. Each DIMM module is 3.3V SDRAM with max. 512MB.

The VGA chip (On chip SIS300) used on NOVA-7895 supports dual view functions which can display simultaneously on two monitors under WINDOWS 9X/ME. In general, this function is achieved by two VGA chips.

4.7	Advanced BIOS Features Setup	42
4.8	Advanced Chipset Features Setup	46
4.9	Integrated Peripherals Setup	53
4.10	Power Management Setup	55
4.11	PnP/PCI Configuration Setup.....	58
4.12	PC Health Status Setup.....	61
4.13	Frequency / Voltage Control Setup	62
4.14	Defaults Menu Setup	63
4.15	Change Supervisor/User Password.....	64
4.16	Exit Selection	65
Appendix A. Watch-Dog Timer		67
Appendix B. POST Messages		69
Appendix C.		
DMA, IRQ and 1st MB Memory and I/O Address Map....		75
Appendix D.....		77
How to Upgrade a New BIOS		77
Appendix E. Digital Input / Output.....		80
Appendix F. Flat Panel Connection Module		81
Appendix G. Dual View Setup.....		84

1.1 Specifications:

- **CPU:** support Intel Celeron® up to 566MHz(or above) , Pentium III (FC-PGA) 500-1000Hz (or above), Tualatin 1.26GHz,1.4GHz (or above), processors. Supports 66MHz, 100MHz and 133 MHz FSB.
- **Expansion Bus:** PCI & PC104 Plus bus, expansion to support PCI bus signal
- **DMA channels:** 7
- **Interrupt levels:** 15
- **Chipset:** SIS630STT 66/100/133MHz CPU / DRAM Clock
- **DRAM:** One 168-pin DIMM socket, supports SDRAM RAM module, up to 512MB.
- **AGP VGA Controller:** On chip SIS300 3D (Share memory up to 64MB RAM)
AGP bus speed: 66MHz
VESA Compatible Resolution Graphic Mode up to:

1600 x 1200 256/32K colors 100 Hz
1280 x 1024 256/32K/64K/16M colors 120 Hz
1024 x 768 256/32K/64K/16M colors 120 Hz
800 x 600 16/256/32K/64K/16M colors 120 Hz
640 x 480 16/256/32K/64K/16M colors 120 Hz
- **Support 3.3V & 5V Flat Panel.**
- **Support 24bit TFT wide range flat panel.**
- **Optional (LVDS-01) One Channel LVDS module.**

- **TV-OUT:** On board SiS 301(optional), supports both NTSC and PAL.
Display mode support:
Two CRT output (Dual View & Dual Display)
One CRT & One TV-OUT output (Dual View & Dual Display)
One CRT & One LCD output (Dual View)
- **10/100Mbps Ethernet Controller:** Two Ethernet - Realtek 8100 or Intel 82559, Auto-sensing interface to 10/100Mbps Network, RJ45 connector for 10BASE-T and 100BASE-TX, Full Duplex capability, Full Software driver support
- **Ultra DMA/66/100 (Enhanced PCI IDE Interface):** Supports two PCI Enhanced IDE hard drives. The Ultra DMA/66/100 IDE can handle data transfer up to 66,100MB/s. Best of all, this new technology is compatible with existing ATA-2 IDE specifications so there is no need to make any changes to customer's current accessory.
- **Multi-I/O Chip:** IT8705F, NS87366, all I/O setup by BIOS
Three 16C550 RS-232C Ports, One RS-232 or RS-422/485 Port, One EPP/ECP Parallel Port, Floppy Port. The RS485 features auto-direction control, ensuring that no additional direction control is needed.
- **Floppy disk drive interface:** Two 2.88 MB, 1.44MB, 1.2MB, 720KB, or 360KB floppy disk drives.
- **Four high-speed Serial ports:** NS16C550 compatible UARTs
- **Bi-directional Parallel Port:** One parallel port support, IEEE 1284 compatible.
- **IrDA port:** Supports Infrared and Amplitude Shift Keyed IR (ASKIR) interface.
- **USB port:** Supports Four USB ports for future expansion. USB V1.2 compatible.
- **Watchdog timer:** Supports resolution of 1 sec and period of 1-255 secs. Reset is generated when CPU does not periodically trigger the timer. IO port – 443H can be used to control the watch-dog .
- **CompactFlash Disk – Type II CompactFlash™ Disk .** The Flash Disk provides 100% compatibility with IDE hard disk.
- **Digital I/O :** Isolated 4 Digital Input and 4 Digital Output channels

- **SIS7018 PCI Audio Chipset:** Sound Blaster and Roland MPU401 compatible (AC97)
- **Supports ATX Power function**
- **Dual View Function**
- **Mouse & Keyboard Connector :** PS/2 Mouse Port Expansion Keyboard.
- **TI TSB43AB22 IEEE1394 Controller:** The TSB43AB22 offers digital and analog transceiver functions to implement a two-port node in a cable-based IEEE 1394. It also provides two P1394a fully compliant cable ports at 100/200/400 megabits per second (Mbits/s).
- **Power Consumption :** +5V : 7.5A (Celeron 1.4GHz, 256MB SDRAM) +12V : 0.3A
- **Operating Humidity :** 5 ~ 95 % , non-condensing
- **Operating Temperature :** -10° ~ 60° C (CPU needs Cooler)

1.2 Package Contents

In addition to this *User's Manual*, the NOVA-7895 package includes the following items:

- NOVA-7895 Socket 370 Celeron[®] , Pentium III & Dual Ethernet , IEEE1394 ,VGA , Audio Board
- FDD/HDD (1x2.54mm and 1x2.54mm Support DMA66)Cable (32200-000017 / 32200-000052)
- Keyboard / Mouse Adapter Mini Dim Cable x1 (32000-000075 / 32000-000153)
- Printer / Serial Port (1x RS232) Cable x1 (32000-000004 / 322000-000015)
- Serial Port (14Pin 1xRS232/RS422,RS485 / 20Pin 2xRS232) Cable x1 (32200-000063 / 32200-000003)
- Audio Cable x1 (32000-000035)
- VGA Cable x1 (32000-033800)

If any of these items are missing or damaged, please contact the dealer from whom you purchased this product. Be sure to save the shipping materials and carton in case you want to ship or store the product in the future.

2

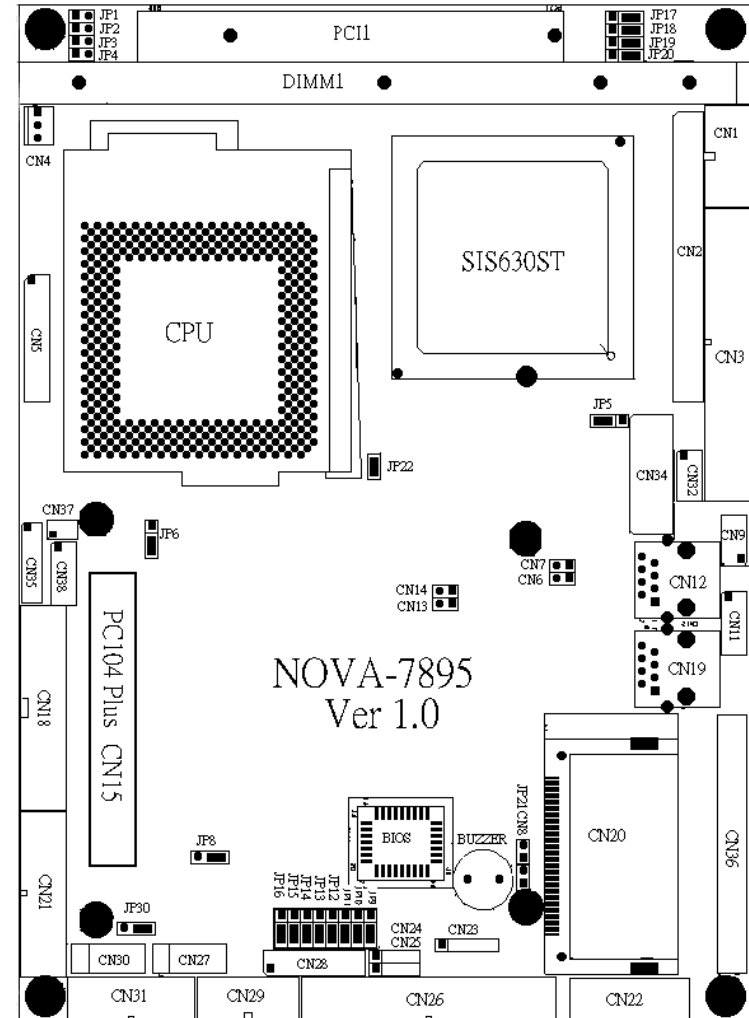
Installation

This chapter describes how to install the NOVA-7895. The layout of the NOVA-7895 is shown on the next page and the Unpacking Precautions are described on the following one. Also included is the setting for the jumpers and switches on this board's configuration, such as CPU type selection, system clock setting and Watchdog timer.

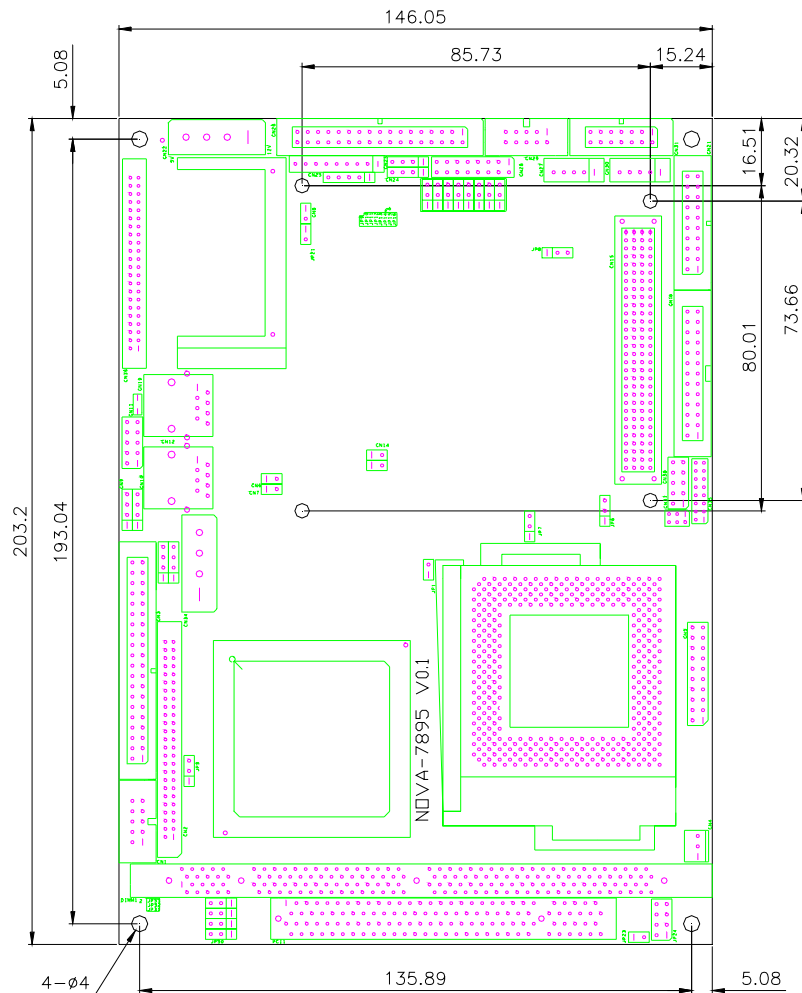
2.1 NOVA-7895 Layout

< please, refer to the next page >

2.1 NOVA-7895 Layout



2.2 NOVA-7895 Dimensions (Unit : mm)



2.3 Unpacking Precautions

Some of the components on the NOVA-7895 are very sensitive to static electric charges and can be damaged by a sudden rush of power. To protect them from accidental damage, please be sure to follow these precautions:

- ✓ Ground yourself to remove any static charge before touching your NOVA-7895. You can do it by using a grounded wrist strap at all times or by frequently touching any conducting materials that are connected to the ground.
- ✓ Handle your NOVA-7895 at the edges. Don't touch IC chips, leads or circuitry if not necessary.
- ✓ Do not plug in any connector or jumper while the power is on.
- ✓ Do not put your NOVA-7895 unprotected on a flat surface as it has sensitive components on both sides.

2.4 Clear CMOS Setup

If you forget the CMOS password, you can clear or reset it by closing the **JP6**. After JP6 (1-2) is closed, turn on the power for about 3 seconds then turn it off and re-open the JP6 (1-2). Now, the password has been cleared from your CMOS.

• JP6 : Clear CMOS Setup



PIN NO.	DESCRIPTION
2-3	Normal Operation
1-2	Clear CMOS Setup

2.5 COM2 RS-232/422,485 Selection

- JP8 : COM2 Mode Selection



JP8	DESCRIPTION
1-2	RS232
2-3	RS422/RS485

** 2-3 RS422 / RS485 (Optional)

2.6 COM Port RI and Voltage Selection

- JP16, JP15: Set pin 9 of COM1 as signal RI or voltage source



JP16	DESCRIPTION
2-3	COM1 RI Pin Use RI
1-2	COM1 RI Pin Use Voltage

JP15	DESCRIPTION
2-3	COM1 RI Pin Use Voltage +12V
1-2	COM1 RI Pin Use Voltage +5V

* If JP16 uses (2-3) then JP15 does not need any specific setting.

- JP14, JP13: Set pin 9 of COM2 as signal RI or voltage source



JP14	DESCRIPTION
2-3	COM2 RI Pin Use RI
1-2	COM2 RI Pin Use Voltage

JP13	DESCRIPTION
2-3	COM2 RI Pin Use Voltage +12V
1-2	COM2 RI Pin Use Voltage +5V

* If JP14 uses (2-3) then JP13 does not need any specific setting.

- JP11, JP12: Set pin 9 of COM3 as signal RI or voltage source



JP11	DESCRIPTION
2-3	COM3 RI Pin Use RI
1-2	COM3RI Pin Use Voltage

JP12	DESCRIPTION
2-3	COM3 RI Pin Use Voltage +12V
1-2	COM3RI Pin Use Voltage +5V

* If JP11 uses (2-3) then JP12 does not need any specific setting.

- JP9, JP10: Set pin 9 of COM4 as signal RI or voltage source



JP9	DESCRIPTION
2-3	COM4 RI Pin Use RI
1-2	COM4RI Pin Use Voltage

JP10	DESCRIPTION
2-3	COM4 RI Pin Use Voltage +12V
1-2	COM4RI Pin Use Voltage +5V

* If JP9 uses (2-3) then JP10 does not need any specific setting.

2.7 LCD Panel power Setup

To set the operating voltage for the LCD Panel.

• JP5 : LCD Power Setting



JP5	DESCRIPTION
2-3	+3.3V
1-2	+5V

* Set to +5V is NOT standard

2.8 LCD Panel Type Selection

NOVA-7895 can support up to 24 bit LCD.

• JP17,18,19,20 : LCD Panel Type Selection (H/W)

Now support LCD Type:

1. IMES M121-SOHR (800x600 TFT)
2. LG LM151X2 (1024x768 TFT)
3. SAMSUNG LT121S1-153 (800x600 TFT)
4. SAMSUNG LT121S1-106 (800x600 TFT)



JP17	JP18	JP19	JP20	DESCRIPTION
2-3	2-3	1-2	2-3	1024X768 TFT
2-3	2-3	2-3	2-3	800X600 TFT

2.9 CompactFlash™ Disk Setting

The CompactFlash™ Disk is 100% compatible to IDE hard disk and because it is “plug and play”, it is also easy and reliable. The CompactFlash™ Disk is available from 128MB to 1GB. Additionally, it can accept type II IBM Micro Driver .

• JP21: CompactFlash™ Disk IDE Master & Slave Setting



* CompactFlash™ Disk Use Secondary IDE Channel

PIN NO.	DESCRIPTION
Open	Slave
Short	Master

2.10 AT or ATX POWER Setting

• JP22: POWER AT or ATX Setting

PIN NO.	DESCRIPTION
Open	ATX
Short	AT

2.11 PC104 PLUS VIO power Setup

To set the operating voltage for the PC104 Plus interface Vio.

• JP30 : PC104 PLUS VIO Power Setting

JP30	DESCRIPTION
1-2	+3.3V
2-3	+5V

3

Connection

This chapter describes how to connect peripherals, switches and indicators to the NOVA-7895 board.

3.1 Floppy Disk Drive Connector

NOVA-7895 board is equipped with a 34-pin daisy-chain driver connector cable.

• CN26 : FDD CONNECTOR

PIN NO.	DESCRIPTION	PIN NO.	DESCRIPTION
1	GROUND	2	REDUCE WRITE
3	GROUND	4	N/C
5	GROUND	6	N/C
7	GROUND	8	INDEX#
9	GROUND	10	MOTOR ENABLE A#
11	GROUND	12	DRIVE SELECT B#
13	GROUND	14	DRIVE SELECT A#
15	GROUND	16	MOTOR ENABLE B#
17	GROUND	18	D4IRECTION#
19	GROUND	20	STEP#
21	GROUND	22	WRITE DATA#
23	GROUND	24	WRITE GATE#
25	GROUND	26	TRACK 0#
27	GROUND	28	WRITE PROTECT#
29	GROUND	30	READ DATA#
31	GROUND	32	SIDE 1 SELECT#
33	GROUND	34	DISK CHANGE#

3.2 PCI E-IDE Disk Drive Connector

You can attach two IDE (Integrated Device Electronics) hard disk drives to the NOVA-7895 IDE controller. The maximal data transfer rate is 66M B/s . In this case, the total cable length may not exceed 0.46 m (18in).

CN3 (40Pin 2.54mm IDE) : Primary IDE Connector

• CN3 : IDE Interface Connector

PIN NO.	DESCRIPTION	PIN NO.	DESCRIPTION
1	RESET#	2	GND
3	DATA 7	4	DATA 8
5	DATA 6	6	DATA 9
7	DATA 5	8	DATA 10
9	DATA 4	10	DATA 11
11	DATA 3	12	DATA 12
13	DATA 2	14	DATA 13
15	DATA 1	16	DATA 14
17	DATA 0	18	DATA 15
19	GND	20	N/C
21	IDE DRQ	22	GND
23	IOW#	24	GND
25	IOR#	26	GND
27	IDE CHRDY	28	GND
29	IDE DACK	30	GND
31	INTERRUPT	32	N/C
33	SA 1	34	N/C
35	SA 0	36	SA 2
37	HDC CS0#	38	HDC CS1#
39	HDD ACTIVE#	40	GND

CN36 (44Pin 2.0mm IDE) : Secondary IDE Connector

• CN36 : IDE Interface Connector(Default without)

PIN NO.	DESCRIPTION	PIN NO.	DESCRIPTION
1	RESET#	2	GROUND
3	DATA 7	4	DATA 8
5	DATA 6	6	DATA 9
7	DATA 5	8	DATA 10
9	DATA 4	10	DATA 11
11	DATA 3	12	DATA 12
13	DATA 2	14	DATA 13
15	DATA 1	16	DATA 14
17	DATA 0	18	DATA 15
19	GROUND	20	N/C
21	IDE DRQ	22	GROUND
23	IOW#	24	GROUND
25	IOR#	26	GROUND
27	IDE CHRDY	28	GROUND
29	IDE DACK	30	GROUND-DEFAULT
31	INTERRUPT	32	N/C
33	SA1	34	N/C
35	SA0	36	SA2
37	HDC CS0#	38	HDC CS1#
39	HDD ACTIVE#	40	GROUND
41	VCC	42	VCC
43	GROUND	44	N/C

3.3 Parallel Port

This port is usually connected to a printer. The NOVA-7895 includes an on-board parallel port, accessed via a 26-pin flat-cable connector CN18.

• CN18 : (LPT1) Parallel Port Connector

Pin	Description	Pin	Description
1	STROBE#	2	AUTO FORM FEED #
3	DATA 0	4	ERROR#
5	DATA 1	6	INITIALIZE
7	DATA 2	8	PRINTER SELECT LN#
9	DATA 3	10	GND
11	DATA 4	12	GND
13	DATA 5	14	GND
15	DATA 6	16	GND
17	DATA 7	18	GND
19	ACKNOWLEDGE	20	GND
21	BUSY	22	GND
23	PAPER EMPTY	24	GND
25	PRINTER SELECT	26	N/C

3.4 Serial Ports

The NOVA-7895 is equipped with four high speed NS16C550 compatible UART's with Read/Receive 16 byte FIFO serial ports (COM1/COM2/COM3/COM4).

- **CN29 : Serial Port 2x5 pin header Connector (COM1)**

Pin No.	Description	Pin No.	Description
1	DCD	2	DSR
3	RXD	4	RTS
5	TXD	6	CTX
7	DTR	8	RI
9	GND	10	NC

- **CN31 : Serial Port 2x7 pin header Connector (COM2)**

COM2 Support Three Mode : RS232, RS422/RS485

(For 2x7 pin header Connector)

RS232 Mode

Pin No.	Description	Pin No.	Description
1	DCD	2	DSR
3	RXD	4	RTS
5	TXD	6	CTX
7	DTR	8	RI
9	GND	10	NC

RS422 / RS485 Mode (Option)
(For 2x7 pin header Connector)

RS422 Mode

Pin No.	Description	Pin No.	Description
1		2	
3		4	
5		6	
7		8	
9		10	
11	TX+	12	TX-
13	RX+	14	RX-

(For 2x7 pin header Connector)

RS485 Mode

Pin No.	Description	Pin No.	Description
1		2	
3		4	
5		6	
7		8	
9		10	
11	TX+	12	TX-
13		14	

- **CN21 : Serial Port 2x10 pin header Connector (COM3 / 4)**

(For 2x10 pin header Connector)

COM3 : CN21 PIN 1 - 10

COM4 : CN21 PIN 11 - 20

Pin No.	Description	Pin No.	Description
1	DCD3	2	DSR3
3	RXD3	4	RTS3
5	TXD3	6	CTX3
7	DTR3	8	RI3
9	GND	10	N/C
11	DCD4	12	DSR4
13	RXD4	14	RTS4
15	TXD4	16	CTX4
17	DTR4	18	RI4
19	GND	20	N/C

3.5 Keyboard/Mouse Connector

The NOVA-7895 provides the following connectors: one internal, one mouse and one keyboard.

• CN27 : 5-pin Header Mouse Connector

PIN NO.	DESCRIPTION
1	MS DATA
2	N/C
3	GND
4	VCC
5	MS CLOCK

• CN30 : 5-pin Header Keyboard Connector

PIN NO.	DESCRIPTION
1	KB CLOCK
2	KB DATA
3	N/C
4	GND
5	+5V

3.6 External Switches and Indicators

There are several external switches and indicators for monitoring

and controlling your CPU board. All functions are in the CN5 connector.

• CN5 : Multi Panel

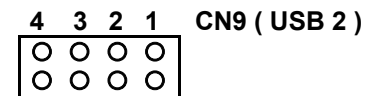
PIN NO.	DESCRIPTION	PIN NO.	DESCRIPTION
1.	SPEAKER	11	POWER-LED +
2.	N/C	12	N/C
3.	N/C	13	POWER-LED -
4.	SPEAKER +5V	14	KEYLOCK+
5.	RESET SW	15	KEYLOCK -
6.	RESET SW GND	16	GND
7.	IDE LED -	17	N/C
8.	IDE LED+	18	ATX POWER PSON#
9.	ATX POWER BUTTON	19	ATX 5VSB
10.	ATX POWER BUTTON GND	20	ATX 5VSB

3.7 USB Port Connector

The NOVA-7895 has two built-in USB ports for the future I/O bus expansion.

• CN9 : Pin Header USB Connectors

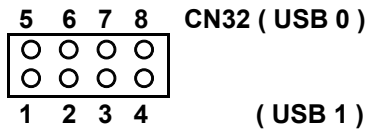
PIN NO.	Description
1	VCC
2	USBD2-
3	USBD2+
4	GND
5	GND
6	USBD3+
7	USBD3-
8	VCC



8 7 6 5 (USB 3)

• CN32 : Pin Header USB Connectors

PIN NO.	Description
1	VCC
2	USBD0-
3	USBD0+
4	GND
5	GND
6	USBD1+
7	USBD1-
8	VCC



The NOVA-7895FWT has a built-in 10-pin Header VGA(CN1) connector, which directly connects to your CRT monitor, and a pin header 10pin (CN38) which provides secondary CRT output .

The primary CRT output is provided by the SIS630ST. The secondary CRT output comes from the SIS301. Both support dual-view function.

The SIS301 also offers additional TV-OUT functions with the ability to perform simultaneous actions, such as a dual-view combination, like CRT1/CRT2 , CRT1/TV-OUT.

• CN1 : 10-pin Header VGA Connector(Primary CRT by Chipset)

1	RED	2	SMCLK
3	GREEN	4	SMDATA
5	BLUE	6	GND
7	H-SYNC	8	GND
9	V-SYNC	10	GND

• CN38 : 10-pin Header VGA Connector(Second CRT by SIS301)

1	RED	2	SMCLK
3	GREEN	4	SMDATA
5	BLUE	6	GND
7	H-SYNC	8	GND
9	V-SYNC	10	GND

• CN37 : TV-OUT Connector (2x3_ 2.00mm)

PIN NO.	DESCRIPTION	PIN NO.	DESCRIPTION
1	GROUND	2	Y/Luminance
3	GROUND	4	C/Chrominance
5	GROUND	6	CVBS/Composite

3.8 IrDA Infrared Interface Port

NOVA-7895 built-in IrDA port supports a Serial Infrared (SIR) or Amplitude Shift Keyed IR (ASKIR) interface. To use the IrDA port, the user has to configure the FIR or ASKIR model in the BIOS's Peripheral Setup's COM2. In this case, the normal RS-232 COM2 will be disabled.

• CN23 : IrDA Connector

PIN NO.	DESCRIPTION
1	VCC
2	N/C
3	IR-RX
4	GND
5	IR-TX

3.9 VGA/TV-OUT Connector (CN1/CN38/CN37)

3.10 LAN RJ45 Connector

NOVA-7895 is equipped with two 10/100Mbps Ethernet Controllers.

You can connect them to your LAN via RJ45 connectors. The pin assignments are as follows.

• **CN12,19 : LAN RJ45 Connector**

1	TX+	5.	N/C
2	TX-	6.	RX-
3.	RX+	7.	N/C
4.	N/C	8.	N/C

CN12 ,CN19 : PCI BUS Realtek 8100B LAN

CN12 Ethernet LED setup

LED	Description
CN6	Speed
CN7	Active

CN19 Ethernet LED setup

LED	Description
CN13	Speed
CN14	Active

3.11 Fan Connector

The NOVA-7895 provides one CPU cooling fan connector and one system fan connector, which can supply 12V/500mA to the cooling fan.

• **CN4 : CPU Fan Connector**

PIN NO.	DESCRIPTION
1	GND
2	+12V
3	Fan Sensor

3.12 Temperature Sensor Connector

You can connect an external temperature sensor to this connector.

- **CN8 : Temperature Sensor Connector**
 ** Use 10K Ohm Temperature register sensor

Pin No.	Description	Pin No.	Description
1	THER-DA	2	GND

3.13 Audio CD IN

This is used to connect to CD-Out from the CD-ROM player.

- **CN25 : Audio CD IN (2.54mm)**

Pin No.	Description	Pin No.	Description
1	CD IN_R	2	GND
3	GND	4	CD IN_L

3.14 Audio Speaker OUT (Reserved)

- **CN24 : Left/Right Audio SPK Output Connector**
 via optional amplifier Speaker Output .
 (Two 6W stereo power amplifiers)

1.	(SPK Right Out)
2.	GND
3.	GND
4.	(SPK Left Out)

3.15 Audio Panel

One line-out (2 different pin assignments), one line-in and one mic-in are supported via and un-amplified audio chip.

- **CN28 : Audio Panel**

Pin	Description	Pin	Description
1	Line Out R	2	GND
3	Line Out L	4	GND
5	Line Out R	6	Line Out L
7	GND	8	GND
9	Line In R	10	Line In L
11	GND	12	GND
13	NC	14	NC
15	MIC In	16	GND

21	D0	46	PDIAG#
22	D1	47	D8
23	D2	48	D9
24	N/C	49	D10
25	CARD DETECT2	50	GROUND

3.17 Power Connector

The NOVA-7895 can work without back-plane , when external power is attached.

- **CN22,34: Power Supply Connector**

1.	+5V
2.	GND
3.	GND
4.	+12V

3.18 IEEE1394 Connector

- **CN35 : IEEE1394 Connector**

Pin	Description	Pin	Description
1	+12 VCC	9	+12 VCC
2	GND	10	GND
3	TPB1-	11	TPB0-
4	TPB1+	12	TPB0+
5	TPA1-	13	TPA0-
6	TPA1+	14	TPA0+
7	CASE	15	CASE
8	CASE	16	CASE

3.19 Digital Input / Output

NOVA-7895 provides you with an isolated digital input/output. You will find a detailed explanation of use in appendix G.

3.16 CompactFlash Storage Card Socket

The NOVA-7895 configures CompactFlash Storage Card in IDE Mode. It will use IDE Secondary / Slave channel when CompactFlash card is plugged in.

- **CN20 : CompactFlash Storage Card Socket pin assignment**

PIN NO	DESCRIPTION	PIN NO	DESCRIPTION
1	GROUND	26	CARD DETECT1
2	D3	27	D11
3	D4	28	D12
4	D5	29	D13
5	D6	30	D14
6	D7	31	D15
7	CS1#	32	CS3#
8	N/C	33	N/C
9	GROUND	34	IOR#
10	N/C	35	IOW#
11	N/C	36	OBLIGATORY TO PULL HIGH
12	N/C	37	IRQ15
13	VCC	38	VCC
14	N/C	39	MASTER/SLAVE
15	N/C	40	N/C
16	N/C	41	RESET#
17	N/C	42	IRDY
18	A2	43	N/C
19	A1	44	OBLIGATORY TO PULL HIGH
20	A0	45	ACTIVE#

• CN11 : Digital Input / Output

Pin	Description	Pin	Description
1	Input 0	2	Input 1
3	Input 2	4	Input 3
5	Output 0	6	Output 1
7	Output 2	8	Output 3
9	Ext-GND	10	Ext-VCC

41	SHFCLK	42	ENBLK
43	FPVDD	44	FLM
45	FPVEE	46	LP
47	GND	48	GND
49	+12V	50	+12V

3.21 PCI 104 PLUS Connector

• CN15 : PCI 104 Plus Connector

	A	B	C	D
1	GND	SIRQ	+5V	AD0
2	104VIO	AD2	AD1	+5V
3	AD5	GND	AD4	AD3
4	C/BE0#	AD7	GND	AD6
5	GND	AD9	AD8	GND
6	AD11	104VIO	AD10	
7	AD14	AD13	GND	AD12
8	3.3V	C/BE1#	AD15	3.3V
9	SERR#	GND		PAR
10	GND	PERR#	3.3V	
11	STOP#	3.3V		GND
12	3.3V	TRDY#	GND	DEVSEL#
13	FRAME#	GND	IRDY#	3.3V
14	GND	AD16	3.3V	C/BE2#
15	AD18	3.3V	AD17	GND
16	AD21	AD20	GND	AD19
17	3.3V	AD23	AD22	3.3V
18	IDSEL0(AD20)	GND	IDSEL1(AD21)	IDSEL2(AD22)
19	AD24	C/BE3#	104VIO	IDSEL3(AD23)
20	GND	AD26	AD25	GND
21	AD29	+5V	AD28	AD27
22	+5V	AD30	GND	AD31
23	REQ0#	GND	REQ1#	104VIO
24	GND	REQ2#	+5V	GNT0#
25	GNT1#	104VIO	GNT2#	GND
26	+5V	CLK0	GND	CLK1

3.20 LCD Panel Connector

• CN2 : LCD Panel Connector

Pin	Description	Pin	Description
1	NC	2	NC
3	NC	4	NC
5	NC	6	NC
7	NC	8	NC
9	NC	10	NC
11	NC	12	NC
13	NC	14	P21
15	P23	16	P22
17	P16	18	P20
19	P17	20	P18
21	P19	22	P14
23	P13	24	P12
25	P15	26	P11
27	P7	28	P10
29	VDD	30	VDD
31	P9	32	P8
33	P4	34	P6
35	P3	36	P5
37	P2	38	P1
39	M	40	P0

27	CLK2	+5V	CLK3	GND
28	GND	INTD#	+5V	PCIRST#
29	+12V	INTA#	INTB#	INTC#
30		REQ3#	GNT3B	GND

4

AWARD BIOS SETUP

4.1 Introduction

This section of the manual discusses Award's Setup program built into the ROM BIOS. The Setup program allows users to modify the basic system configuration. This special information is then stored in battery-backed RAM so that it retains the Setup information when the power is turned off.

4.2 Starting Setup

The Award BIOS is immediately activated when the computer is first powered up. The BIOS reads the system information contained in the CMOS and begins the process of checking out the system and configuring it. Once complete, the BIOS will seek an operating system on one of the disks and then launch and turn control over to the operating system.

While the BIOS is in control, the Setup program can be activated in one of two ways:

1. By pressing immediately after switching the system on, or
2. by pressing the key when the following message appears briefly at the bottom of the screen during the POST (Power On Self Test).

Press DEL to enter SETUP.

If the message disappears before you respond and you still wish to enter Setup, restart the system to try again by turning it OFF then ON or pressing the "RESET" button on the system case. You may also restart by simultaneously pressing the <Ctrl>, <Alt>, and <Delete> keys. If you do not press all three keys at the correct time and the system does not boot, an error message will be displayed and the following will appear on your screen:

PRESS F1 TO CONTINUE, DEL TO ENTER SETUP

4.3 Using Setup

In general, by using the arrow keys, items can be highlighted, whereas pressing <Enter> will select the highlighted option. Use the PageUp and PageDown keys to change entries, press <F1> for help and <Esc> to quit. The following table provides more details about how to navigate in the Setup program using the keyboard.

Up arrow	Move to previous item
Down arrow	Move to next item
Left arrow	Move to the item in the left hand
Right arrow	Move to the item in the right hand
Esc key	Main Menu -- Quit without saving changes into CMOS Status Page Setup Menu and Option Page Setup Menu -- Exit current page and return to Main Menu
PgUp key	Increase the numeric value or make changes
PgDn key	Decrease the numeric value or make changes
+ key	Increase the numeric value or make changes
- key	Decrease the numeric value or make changes
F1 key	General help, only for Status Page Setup Menu and Option Page Setup Menu
(Shift)F2 key	Change color from total 16 colors. F2 to select color forward, (Shift) F2 to select color backward
F3 key	Calendar, only for Status Page Setup Menu
F4 key	Reserved
F5 key	Restore the previous CMOS value from CMOS, only for Option Page Setup Menu
F6 key	Load the default CMOS value from BIOS default table, only for Option Page Setup Menu

F7 key	Load the default
F8 key	Reserved
F9 key	Reserved
F10 key	Save all the CMOS changes, only for Main Menu

4.4 Getting Help

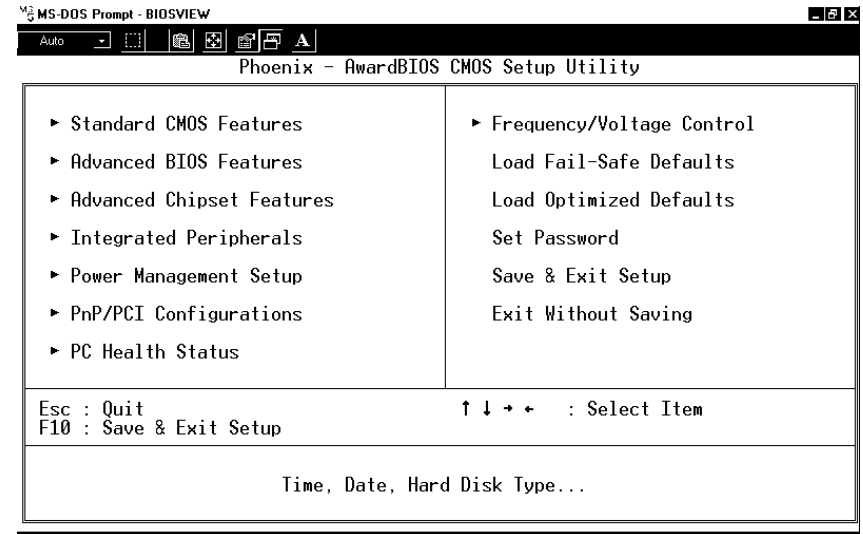
Press F1 to pop up a small help window that describes the appropriate keys to use and the possible selections for the highlighted item. To exit the Help Window press <Esc> or the **F1** key again.

If, after making and saving system changes with Setup, you discover that your computer no longer is able to boot, the Award BIOS supports an override to the CMOS settings which resets your system to its defaults.

The best advice is to only alter settings which you thoroughly understand. To this end, we strongly recommend that you avoid making any changes to the chipset defaults. These defaults have been carefully chosen by both Award and your systems manufacturer to provide the absolute maximum performance and reliability. Even a seemingly small change to the chipset setup has the potential to cause the override to kick in.

4.5 Main Menu

Once you enter the AwardBIOS™ CMOS Setup Utility, the Main Menu will appear on the screen. This allows you to select from several setup functions and two exit choices. Use the arrow keys to select among the items and press <Enter> to accept and enter the sub-menu.



Note that a brief description of each highlighted selection appears at the bottom of the screen.

The main menu includes the following main setup categories. It is important to remember that some systems may not include all entries.

Standard CMOS Features

Use this menu for basic system configuration. See Section 4.6 for details.

Advanced BIOS Features

Use this menu to set the Advanced Features available on your system. See Section 4.7 for details.

Advanced Chipset Features

Use this menu to change the values in the chipset registers and optimize system performance. See section 4.8 for details.

Integrated Peripherals

Use this menu to specify your settings for integrated peripherals. See section 4.9 for details.

Power Management Setup

Use this menu to specify your power management settings. See section 4.10 for details.

PnP / PCI Configuration

This entry appears if your system supports PnP / PCI. See section 4.11 for details.

PC Health Status

Use this menu to monitor your hardware. See section 4.12 for details.

Frequency/Voltage Control

Use this menu to specify frequency/voltage control settings. See section 4.13 for details.

Load Fail-Safe Defaults

Use this menu to load the BIOS default values for minimal/stable performance for your system to operate. See section 4.14 for details.

Load Optimized Defaults

Use this menu to load the factory BIOS default values for optimal performance system operations. While Award has designed the custom BIOS to maximize performance, the factory has the right to change these defaults to meet their needs. See section 4.14 for details.

Set Password

Use this menu to set User and Supervisor Passwords. See section 4.15 for details.

Save & Exit Setup

Save CMOS value changes to CMOS and exit setup. See section 4.16 for details.

Exit Without Save

Abandon all CMOS value changes and exit setup. See section 4.16 for details.

4.6 Standard CMOS Setup

The items in Standard CMOS Setup Menu are divided into 10 categories. Each category includes no, one or more than one setup items. Use the arrow keys to highlight the item and then use the <PgUp> or <PgDn> keys to select the value you want in each item.

Phoenix-AwardBIOS CMOS Setup Utility Standard CMOS Features		Item Help
Date:	Mon, Jul 15 2002	
Time:	16:19:20	
➤ IDE Primary Master	2557 MB	Menu Level ➤
➤ IDE Primary Slave	None	Change the day, month, year and century
➤ IDE Secondary Master	None	
➤ IDE Secondary Slave	None	
Drive A	1.44M, 3.5 in.	
Drive B	None	
LCD&CRT Panel :	Both Hardware	
Setting Halt On	All Errors	
Based Memory	640K	
Extended Memory	64512K	
Total Memory	65536K	
↑↓←→Move Enter: Select +/-/PU/PD: Value F10:Save ESC: Exit F1:General Help F5:Previous Values F6:Fail-safe defaults F7:Optimized Defaults		

Figure 1: The Main Menu

Main Menu Selections

Item	Options	Description
Date	MM DD YYYY	Set system date.
Time	HH : MM : SS	Set system time
IDE Primary Master	Options are in its sub menu (described in Table 3)	Press <Enter> to enter the sub menu of detailed options
IDE Primary Slave	Options are in its sub menu (described in Table 3)	Press <Enter> to enter the sub menu of detailed options
IDE Secondary Master	Options are in its sub menu (described in Table 3)	Press <Enter> to enter the sub menu of detailed options
IDE Secondary Master	Options are in its sub menu (described in Table 3)	Press <Enter> to enter the sub menu of detailed options
Drive A Drive B	None 360K, 5.25 in 1.2M, 5.25 in 720K, 3.5 in 1.44M, 3.5 in 2.88M, 3.5 in	Select the type of floppy disk drive installed in your system
LCD&CRT	Both CRT	Select LCD & CRT Display
Panel	Hardware Setting 800x600 TFT1 800x600 TFT2 1024x768 18bit TFT1 1024x768 18bit TFT2 1024x768 18bit TFT3 1024x768 18bit TFT4 1024x768 24bit TFT	Select Panel Type. Every type is predefined with a special timing. You may try each setting according to your LCD. However, not every kind of LCD will be supported.
Halt On	All Errors No Errors All, but Keyboard All, but Diskette All, but Disk/Key	Select the situation in which you want the BIOS to stop the POST process and notify you
Base Memory	N/A	Displays the amount of conventional memory

		detected during boot up
Extended Memory	N/A	Displays the amount of extended memory detected during boot up
Total Memory	N/A	Displays the total memory available in the system

Table 2 Main Menu Selections

IDE Adapters

The IDE adapters control the hard disk drive. Use a separate sub menu to configure each hard disk drive.

Figure 2 shows the IDE primary master sub menu.

Phoenix-AwardBIOS CMOS Setup Utility
 CMOS Setup Utility – Copyright © 1984-2001 Award Software
 IDE Primary Master

IDE HDD Auto-Detection	Press Enter	Item Help
IDE Primary Master	Auto	Menu Level >>
Access Mode	Auto	
Capacity	2557 MB	To auto-detect the HDD's size, head... on this channel
Cylinder	4956	
Head	16	
Precomp	0	
Landing Zone	4955	
Sector	63	
↑↓←→Move Enter: Select +/-/PU/PD: Value F10:Save ESC: Exit F1:General Help F5:Previous Values F6:Fail-safe defaults F7:Optimized Defaults		

Figure 2 IDE Primary Master sub menu

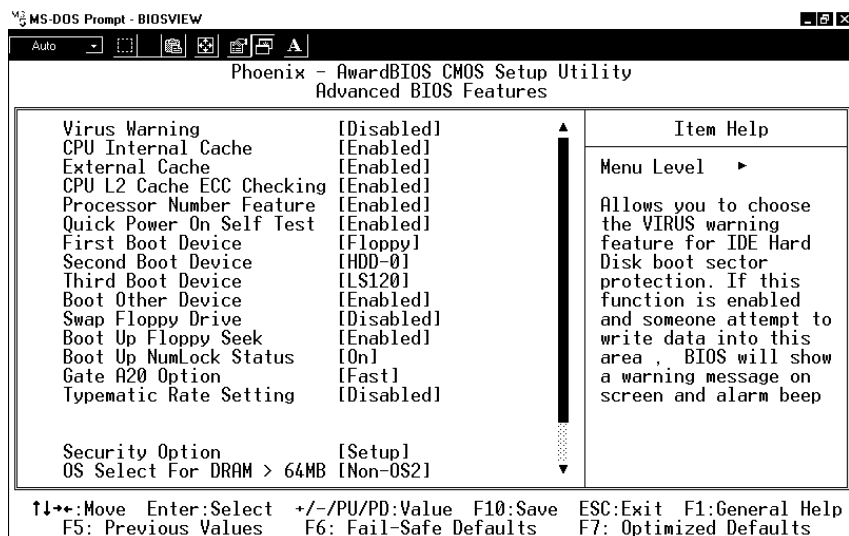
Use the legend keys to navigate through this menu and exit to the main menu. Use Table 3 to configure the hard disk.

Item	Options	Description
IDE HDD Auto-detection	Press Enter	Press Enter to auto-detect the HDD on this channel. If detection is successful, it fills the remaining fields on this menu.
IDE Primary Master	None Auto Manual	Selecting 'manual' lets you set the remaining fields on this screen. Selects the type of fixed disk. "User Type" will let you select the number of cylinders, heads, etc. Note: PRECOMP=65535 means NONE !
Capacity	Auto Display your disk drive size	Disk drive capacity (Approximate). Note that this size is usually slightly greater than the size of a formatted disk given by a disk checking program.
Access Mode	Normal LBA Large Auto	Choose the access mode for this hard disk
The following options are selectable only if the 'IDE Primary Master' item is set to 'Manual'		
Cylinder	Min = 0 Max = 65535	Set the number of cylinders for this hard disk.
Head	Min = 0 Max = 255	Set the number of read/write heads
Precomp	Min = 0 Max = 65535	**** Warning: Setting a value of 65535 means no hard disk
Landing zone	Min = 0 Max = 65535	****
Sector	Min = 0 Max = 255	Number of sectors per track

Table 3 Hard disk selections

4.7 Advanced BIOS Features

This section allows you to configure your system for basic operation. You have the opportunity to select the system's default speed, boot-up sequence, keyboard operation, shadowing and security.



Virus Warning

Allows you to choose the VIRUS Warning feature for IDE Hard Disk boot sector protection. If this function is enabled and someone attempts to write data into this area, BIOS will show a warning message on the screen and an audible alarm will sound.

Enabled	Activates automatically when the system boots up causing a warning message to appear when anything attempts to access the boot sector or hard disk partition table.
---------	---------------------------------------------------------------------------------------------------------------------------------------------------------------------

Disabled	No warning message will appear when anything attempts to access the boot sector or hard disk partition table.
----------	---------------------------------------------------------------------------------------------------------------

CPU Internal Cache/External Cache

These two categories speed up memory access. However, memory access speed depends on the CPU/chipset design.

Enabled	Enable cache
Disabled	Disable cache

CPU L2 Cache ECC Checking

This item allows you to enable/disable CPU L2 Cache ECC checking. The choice: Enabled, Disabled.

Processor Number Feature

Some of the new generation of socket-370 processors are installed with a unique processor number. This number may be used for verification in Internet transactions and e-commerce. If you prefer not to use or distribute the unique processor number, use this item to suppress the processor number. The Choice: Enable, Disable.

Quick Power On Self Test

This category speeds up Power On Self Test (POST) after you power up the computer. If it is set to Enable, BIOS will shorten or skip some check items during POST.

Enabled	Enable quick POST
Disabled	Normal POST

First/Second/Third/Other Boot Device

The BIOS attempts to load the operating system from the devices in the sequence selected in these items.

The Choice: Floppy, LS/ZIP, HDD, SCSI, CDROM, Disabled.

Swap Floppy Drive

If the system has two floppy drives, you can swap the logical drive name assignments.

The choice: Enabled/Disabled.

Boot Up Floppy Seek

Seeks disk drives during boot up. Disabling speeds boot up.

The choice: Enabled/Disabled.

Boot Up NumLock Status

Select power on state for NumLock.

The choice: Enabled/Disabled.

Gate A20 Option

Select if chipset or keyboard controller should control GateA20.

Normal	A pin in the keyboard controller controls Gate A20
Fast	Lets chipset control GateA20

Typematic Rate Setting

Key strokes repeat at a rate determined by the keyboard controller. When enabled, the typematic rate and typematic delay can be selected.

The choice: Enabled/Disabled.

Typematic Rate (Chars/Sec)

Sets the number of times a second to repeat a key stroke when you hold the key down.

The choice: 6, 8, 10, 12, 15, 20, 24, 30.

Typematic Delay (Msec)

Sets the delay time after the key is held down before it begins to repeat the keystroke.

The choice: 250, 500, 750, 1000.

Security Option

Select whether the password is required every time the system boots or only when you enter setup.

System	The system will not boot and access to Setup will be denied if the correct password is not entered at the prompt.
Setup	The system will boot, but access to Setup will be denied if the correct password is not entered at the prompt.

Note: To disable security, select PASSWORD SETTING at Main Menu and then you will be asked to enter password. By not typing anything and just pressing <Enter>, security will be disabled. Once security is disabled, the system will boot and you can enter Setup freely.

OS Select For DRAM > 64MB

Select the operating system that is running with greater than 64MB of RAM on the system.

The choice: Non-OS2, OS2.

Report No FDD For Win 95

Asks if a report for no FDD for Win 95 is required.

The choice: Yes, No.

Video BIOS Shadow

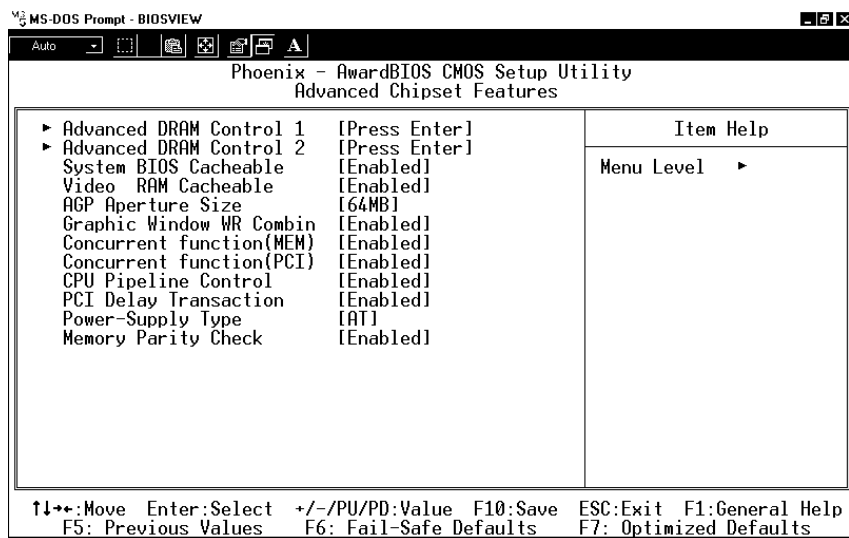
This item allows the video BIOS to be copied to the system memory for faster performance.

The Choice : Enable , Disable.

Small Logo (EPA) Show

The Choice : Enable , Disable.

4.8 Advanced Chipset Features



This section allows you to configure the system based on the specific features of the installed chipset. This chipset manages bus speeds and access to system memory resources, such as DRAM and the external cache. It also coordinates communications between the conventional ISA bus and the PCI bus. It must be stated that these items should never need to be altered. The default settings have been chosen because they provide the best operating conditions for your system.

Advanced DRAM Control 1 / 2 Settings

The first chipset settings deal with CPU access to dynamic random access memory (DRAM). The default timings have been carefully chosen and should only be altered if data is being lost. Such a scenario might well occur if your system had mixed speed DRAM chips installed so that greater delays may be required to preserve the integrity of the data held in the slower memory chips.

Auto Configuration

This item will automatically configure the chipset timing. You may select 'manual' to set up following gray items by your specific need.

The choice: Manual, Auto, 100MHZ, 133MHZ.

SDRAM RAS Active Time

This item defines SDRAM ACT to PRE command period.

The Choice: 6T, 7T, 5T, 4T.

SDRAM RAS Precharge Time

This item defines SDRAM PRE to ACT command period.

The Choice: 3T, 2T, 4T, Reserved.

RAS to CAS Delay

This item defines SDRAM ACT to Read/Write command period.

The choice: 3T, 2T, 4T, Reserved.

Dram Background Command

This item is lead-off time control for DRAM background command. When 'Delay 1T' is selected, background commands are issued 1 clock behind memory address (MA). When 'Normal' is selected, background command and MA are issued at the same time.

The choice: Delay 1T, Normal.

LD-Off Dram RD/WR Cycles

The item is lead-off time control for DRAM Read/Write Cycles. When select 'Delay 1T', memory read/write command is issued 1 clock behind memory address (MA) been issued. When select 'Normal', read/write command and MA are issued at the same time.

The choice: Delay 1T, Normal.

Write Recovery Time

This item defines the Data-in to PRE command period.

The choice: 1T, 2T

VCM REF To ACT/REF Delay

This item defines VCM REF to REF/ACT command period.

The choice: 10T, 9T.

VCM ACCT To ACT/REF Delay

This item defines VCM ACT to ACT/REF command period.

The choice: 10T, 9T, 8T, Reserved.

Early CKE Delay 1T Control

This option is used when the system operates under low frequency and CKE delay adjustment method defined in the 'Early CKE Delay Adjustment' which can not meet setup time and hold time requirement.

The choice: Normal, Delay 1T.

Early CKE Delay Adjust

This item controls the timing for CKE. Various delay options are provided to ensure that CKE can meet SDRAM setup time and hold time specification when CKE is driven out.

The Choice: 1ns, 2ns, 3ns, 4ns, 5ns, 6ns, 7ns, 8ns.

Mem. Command Output Time

This item is to control the timing to drive memory command onto the memory bus.

The choice: Normal, Delay 1T.

SDRAM/VCM CAS Latency

When synchronous DRAM is installed, the number of clock cycles of CAS latency depends on the DRAM timing.

The Choice: 2, 3, SPD

SDRCLK Control

This item controls the phase of SDRCLK that lags behind SDCLK.

The choice: Enabled, Disabled.

SDWCLK Control CS#/CKE

This item controls the phase of SDWCLK used for chip set select signals pin that lags ahead SDCLK.

The choice: Enabled, Disabled.

SDWCLK Control MA/SRAS

This item controls the phase of SDWCLK used for MA/ SRAS signals that lags ahead SDCLK.

The choice: +5.0ns~-2.5ns (Default 0.0ns)

SDWCLK Control DQM/MD

This item controls the phase of SDWCLK used for DQM/MD signals that lags ahead SDCLK.

The choice: +5.0ns~-2.5ns (Default 0.0ns)

EGMRCLK Control

This item controls the phase of EGMRCLK that lags behind SDCLK.

The choice: -1.0ns~+6.5ns (Default 0.0ns)

EGMWCLK Control

This item controls the phase of EGMWCLK that lags ahead SDCLK.

The choice: +5.0ns~-2.5ns (Default 0.0ns)

System BIOS Cacheable

Selecting *Enabled* allows caching of the system BIOS ROM at F0000h-FFFFFh, resulting in better system performance. However, if any program writes to this memory area, a system error may result.

The choice: Enabled, Disabled.

Video RAM Cacheable

Select Enabled allows caching of the video RAM , resulting in better system performance. However, if any program writes to this memory area, a system error may result.

The choice: Enabled, Disabled.

AGP Aperture Size

Select the size of the Accelerated Graphics Port (AGP) aperture. The aperture is a portion of the PCI memory address range dedicated to graphics memory address space. Host cycles that hit the aperture range are forwarded to the AGP without any translation.

The Choice: 4M, 8M, 16M, 32M, 64M, 128M, 256M.

Graphic Window WR Combin

Use this item to enable or disable CPU support for WR Combin.

The Choice : Enable , Disable .

Concurrent Function (MEM)

This item is CPU & PCI Masters Concurrently Access Memory Function. Select enabled allows CPU access memory cycles and PCI masters access memory cycles concurrently issued onto host bus and PCI bus, respectively, and then the memory access cycles will be rearranged by SiS630 to memory sequentially.

The choice: Enabled, Disabled

Concurrent Function (PCI)

This item is CPU & PCI Masters Concurrently Access PCI Bus Function. Select enabled allows CPU access PCI bus cycle and PCI masters access memory cycles concurrently issued onto host bus and PCI bus, respectively.

The choice: Enabled, Disabled.

CPU Pipeline Control

When enabled this item, only one pending cycle is allowed at one time.

When disabled, there might be more than two pending cycles at one time depends on the CPU behaviour.

The choice: Enabled, Disabled.

PCI Delay Transaction

If the chipset has an embedded 32-bit write buffer to support delay transaction cycles, you can enable this item to provide compliance with PCI Ver.2.1 specifications. However, we recommend that you leave this item at the default value.

The choice : Enable, Disable.

Power-Supply Type

This item controls the power-supply type to AT or ATX.

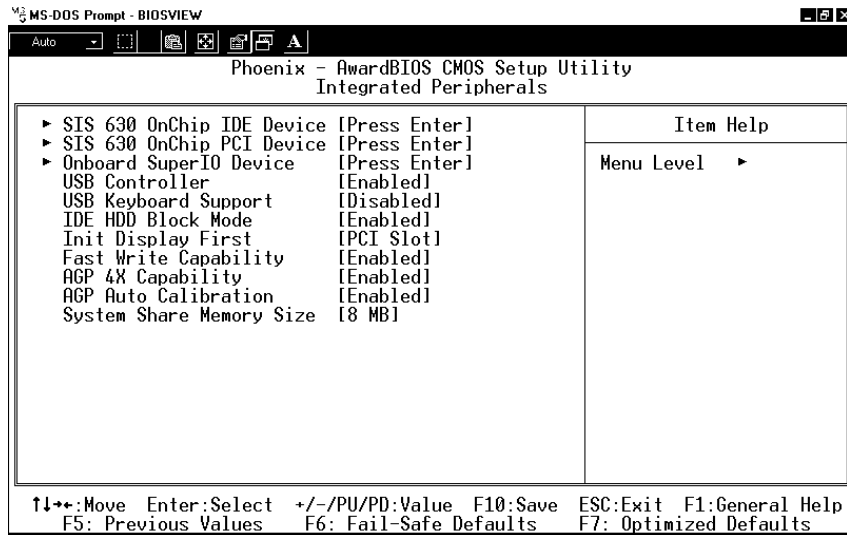
The choice: AT,ATX.

Memory Parity Check

Enabled this item to test the boot-up memory. .

The choice: Enabled, Disabled.

4.9 Integrated Peripherals Setup



SIS 630 OnChip IDE Device

Internal PCI / IDE

This chipset contains an internal PCI IDE interface with support for two IDE channels.

The choice: Primary, Secondary, Both.

IDE Primary Master/Slave PIO

The four IDE PIO (Programmed Input / Output) fields let you set a PIO mode (0-4) for each of the four IDE devices that the onboard IDE interface supports. Modes 0 through 4 provide successively increased performance. In *Auto* mode, the system automatically determines the best mode for each device.

The choice: Auto, Mode 0, Mode 1, Mode 2, Mode 3, and Mode 4.

Primary Master/Slave UltraDMA

UDMA (Ultra DMA) is a DMA data transfer protocol that utilizes ATA commands and the ATA bus to allow DMA commands to transfer data at a maximum burst rate of 33 MB/s. When you select *Auto* in the four IDE UDMA fields (for each of up to four IDE devices that the internal PCI IDE interface supports), the system automatically determines the optimal data transfer rate for each IDE device.

The choice: Auto, Disabled.

IDE Burst Mode

Selecting *Enabled* reduces latency between each drive's read/write cycle, but may cause instability in IDE subsystems that cannot support such fast performance. If you are getting disk drive errors, try setting this value to *Disabled*. This field does not appear when the Internal PCI/IDE field, above, is *Disabled*.

The choice: Enabled, Disabled.

SIS 630 OnChip PCI Device

SIS-7018 AC97 AUDIO

Select *Enabled* to support AC97 Audio.

The choice: Enabled, Disabled.

Super I/O Device

Onboard FDC Controller

Select *Enabled* if your system has a floppy disk controller (FDC) installed on the system board and you wish to use it. If you uninstall the FDC or the system has no floppy drive, select *Disabled* in this field.

The choice: Enabled, Disabled.

Onboard Serial Port 1 / Port 2 / Port 3 / Port 4

Select an address and corresponding interrupt for the first and second serial ports.

The choice: 3F8/IRQ4, 2E8/IRQ3, 3E8/IRQ4, 2F8/IRQ3, Disabled, Auto.

UART Mode Select

This item allows you to select UART mode.

The choice: Enabled, Disabled.

UR2 Duplex Mode

This item allows you to select the IR half/full duplex function.

The choice: Half, Full.

Onboard Parallel Port 1 / Port 2

This option allows you to determine access onboard parallel port controller with a corresponding I/O address.

The choice: 3BC/IRQ7, 378/IRQ7, 278/IRQ5, Disabled.

Parallel Port Mode

Select an operating mode for the onboard parallel (printer) port. Select *Normal*, *Compatible* or *SPP* unless you are certain both your hardware and software support one of the other available modes.

The choice: SPP, EPP, ECP, ECP+EPP.

ECP Mode Use DMA

Select a DMA channel for the parallel port for use during ECP mode.

The choice: 3, 1.

USB Controller

Select *Enabled* if your system contains a Universal Serial Bus (USB) controller and you have USB peripherals.

Choices are: Enabled, Disabled.

USB Keyboard Support

Select *Enabled* if your system contains a Universal Serial Bus (USB) controller and you have a USB keyboard.

Choices are: Enabled, Disabled.

IDE HDD Block Mode

Block mode is also called block transfer, multiple commands, or multiple sector read/write. If your IDE hard drive supports block mode (most new drives do), select Enabled for automatic detection of the optimal number of block read/writes per sector the drive can support.

The choice: Enabled, Disabled.

Init Display First

This item allows you to decide whether to first activate the PCI Slot or the AGP.

The choice: PCI Slot, AGP.

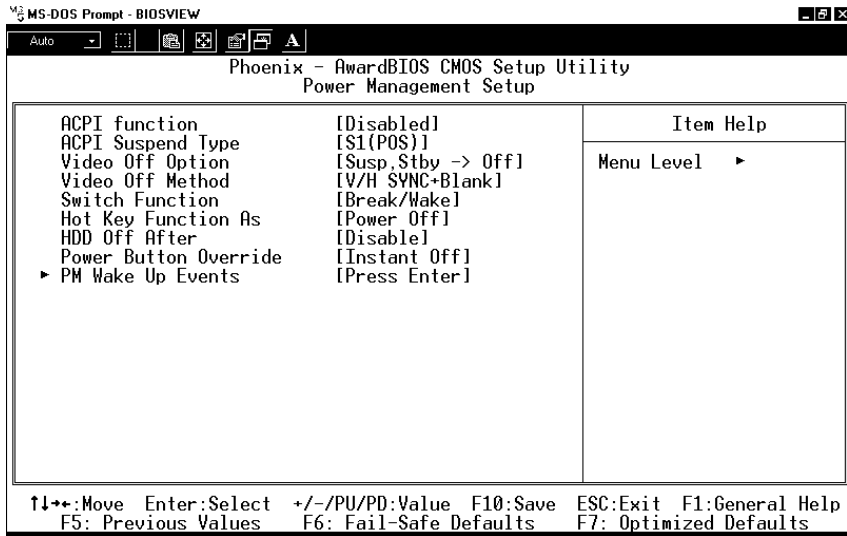
System Share Memory Size

This item defines the System Share Memory Size for video.

The choice: 2MB, 4MB, 16MB, 32MB, 64MB, 2+2MB, 4+4MB, 8+8MB, 16+16MB, 32+32MB

4.10 Power Management Setup

The Power Management Setup allows you to configure your system to most effectively save energy while operating in a manner consistent with your own style of computer use.



ACPI Function

This item allows you to enable/disable the Advanced Configuration and Power Management (ACPI).
The choice: Enabled, Disabled.

ACPI Suspend Type

This item allows you to S1(Power ON Suspend) the Advanced Configuration and Power Management (ACPI).
The choice: S1(POS)

Video Off Option

When enabled, this feature allows the VGA adapter to operate in a power saving mode.

Always On	Monitor will remain on during power saving modes.
-----------	---------------------------------------------------

Suspend --> Off	Monitor blanked when the systems enters the Suspend mode.
Susp,Stby --> Off	Monitor blanked when the system enters either Suspend or Standby modes.
All Modes --> Off	Monitor blanked when the system enters any power saving mode.

Video Off Method

This determines the manner in which the monitor is blanked.

V/H SYNC+Blank	This selection will cause the system to turn off the vertical and horizontal synchronization ports and write blanks to the video buffer.
Blank Screen	This option only writes blanks to the video buffer.
DPMS	Select this option if your monitor supports the Display Power Management Signalling (DPMS) standard of the Video Electronics Standards to select video power management values.

Switch Function

You can choose whether or not to permit your system to enter complete Suspend mode. Suspend mode offers greater power savings, with a correspondingly longer awakening period.

The choice: Break/Wake, Disabled.

Hot Key Function As

Select *Enabled* if your system has a hot key for soft power off.

The choice: Enabled, Disabled.

HDD Off After

By default, this item is Disabled, meaning that no matter what the status is of the rest of the system, the hard drive will remain ready. Otherwise, you have a range of choices from 1 to 15 minutes or Suspend. This means that you can elect to have your hard disk drive turned off after a selected number of minutes or when the rest of the system goes into Suspend mode.

Power Button Over Ride

Pressing the power button for more than 4 seconds forces the system to enter the Soft-Off state when the system has “hung.”

The choice: Soft-Off, Delay 4 Sec.

PM Wake Up Events

IRQ [3-7,9-15],NMI

The following is a list of IRQ's, Interrupt **Re**Quests, which can be exempted in the same way as the COM ports and LPT ports above can. When an I/O device wants to gain the attention of the operating system, it signals this by starting an IRQ. When the operating system is ready to respond to the request, it interrupts itself and performs the service.

As above, the choices are *On* and *Off*.

When set *On*, activity will neither prevent the system from going into a power management mode nor awaken it.

- **IRQ [3-7, 9-15], NMI**
- **IRQ 8 Break Suspend** : You can *Enable* or *Disable* monitoring of IRQ8 (the Real Time Clock) so it does not awaken the system from Suspend mode.

Ring / PCIPME Power Up Control

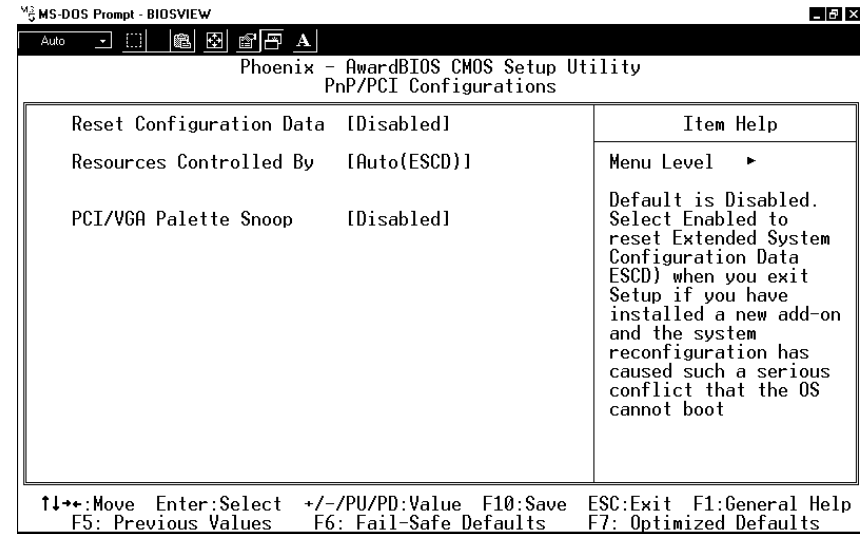
When you select *Enabled*, a signal from ring / PCIPME returns the system to Full On state.

The choice: Enabled, Disabled.

4.11 PnP/PCI Configuration Setup

This section describes how to configure the PCI bus system. PCI, or Personal Computer Interconnect, is a system which allows I/O devices to

operate at speeds close to the speed the CPU itself uses when communicating with its own special components. This section covers some very technical items and it is strongly recommended that only experienced users make any changes to the default settings.



Reset Configuration Data

Normally, you leave this field Disabled. Select Enabled to reset Extended System Configuration Data (ESCD) when you exit Setup if you have installed a new add-on and the system reconfiguration has caused such a serious conflict that the operating system can not boot.

The choice: Enabled, Disabled .

Resource controlled by

The Award Plug and Play BIOS has the capacity to automatically configure all of the boot and Plug and Play compatible devices. However, this capability means absolutely nothing unless you are using a Plug and Play operating system such as Windows®95. By setting this field to “manual” the user can choose specific resources by going into each of the sub menus that follow this field (a sub menu is preceded by a “>”).

The choice: Auto (ESCD), Manual.

IRQ Resources

When resources are controlled manually, assign each system interrupt a type, depending on the type of device using the interrupt.

IRQ3/4/5/7/9/10/11/12/14/15 assigned to

This item allows you to determine the IRQ assigned to the ISA bus and is not available to any PCI slot. Legacy ISA for devices compliant with the original PC AT bus specification, PCI/ISA PnP for devices compliant with the Plug and Play standard whether designed for PCI or ISA bus architecture.

The Choice: *Legacy ISA* and *PCI/ISA PnP*.

PCI/VGA Palette Snoop

We strongly recommend that you leave this field on *Disabled*.
Choices are Enabled, Disabled.

4.12 PC Health Status

This section helps you to get more information about your system including CPU temperature, FAN speed and voltages. It is recommended that you contact your motherboard supplier to get proper value about the CPU temperature setting.

Phoenix-AwardBIOS CMOS Setup Utility		
PC Health Status		
Vcore	1.40V	Item Help
2.5V	2.49V	-----
3.3V	3.37V	Menu Level >
+5V	4.97V	
+12V	11.96V	
3VSB	3.29V	
Temperature1	- 55°C	
Temperature2	40°C	
FAN 1 Speed	4153 RPM	
↑↓←→ Move Enter: Select +/-/PU/PD: Value F10:Save ESC: Exit		
F1:General Help		
F5:Previous Values F6:Fail-safe defaults F7:Optimized Defaults		

Voltage Sensor

The chipset reserves 6 inputs for monitoring working voltages from various sources in the system. These voltages include CPU voltage, power pins of the ATX power (+12V, +5V, 3.3V...) and others.

Temperature 1/2/

The chipset reserves 2 inputs for monitoring temperatures that are typically the CPU & system temperatures.

Fan 1 Speed

The chipset reserves 1 inputs for monitoring FAN speeds in the system. Usually, one FAN is applied to cool down the CPU.

4.13 Frequency/Voltage Control

Phoenix-AwardBIOS CMOS Setup Utility
Frequency/Voltage Control

Auto Detect DIMM/PCI Clk	Disabled	Item Help
Spread Spectrum	Disabled	-----
CPU HOST/SDRAM/PCI Clock	Default	Menu Level >
CPU Clock Ratio	By H/W	

↑↓←→ Move Enter: Select +/-/PU/PD: Value F10:Save ESC: Exit
F1:General Help
F5:Previous Values F6:Fail-safe defaults F7:Optimized Defaults

Auto Detect DIMM/PCI CLK

This item allows you to enable/disable auto detect DIMM/PCI Clock.
The choice: Enabled, Disabled.

Spread Spectrum

This item allows you to enable/disable the spread spectrum modulate.
The choice: Enabled, Disabled.

CPU Host/DRAM/PCI Clock

This item allows you to select CPU/PCI frequency.
The choice: Default, 66/66/33MHz, 133/133/33MHz, 100/100/33MHz.

CPU Clock Ratio

This item allows you to select CPU clock ratio.
The choice: By H/W 3, 3.5, 4, 4.5, 5, 5.5, 6, 6.5, 7, 7.5, 8.

4.14 Defaults Menu

Selecting “Defaults” from the main menu shows you two options which are described below

Load Fail-Safe Defaults

When you press <Enter> on this item you get a confirmation dialog box with a message similar to:

Load Fail-Safe Defaults (Y/N) ? **N**

Pressing ‘Y’ loads the BIOS default values for the most stable, minimal-performance system operations.

Load Optimized Defaults

When you press <Enter> on this item you get a confirmation dialog box with a message similar to:

Load Optimized Defaults (Y/N) ? **N**

Pressing ‘Y’ loads the default values that are factory settings for optimal performance system operations.

4.15 Supervisor/User Password Setting

You can set either supervisor or user password, or both of them. The differences between the two are:

supervisor password :

can enter and change the options of the setup menus.

user password :

users may enter but do not have the right to change the options of the setup menus. When you select this function, the following message will appear at the center of the screen to assist you in creating a password.

ENTER PASSWORD:

Type the password, up to eight characters in length, and press <Enter>. The password typed now will clear any previously entered password from CMOS memory. You will be asked to confirm the password. Type the password again and press <Enter>. You may also press <Esc> to abort the selection and not enter a password.

To disable a password, just press <Enter> when you are prompted to enter the password. A message will confirm the password will be disabled. Once the password is disabled, the system will boot and you can enter Setup freely.

PASSWORD DISABLED.

When a password has been enabled, you will be prompted to enter it every time you try to enter Setup. This prevents an unauthorized user from changing any part of your system configuration.

Additionally, when a password is enabled, you can also require the BIOS to request a password every time your system is rebooted. This prevents unauthorized use of your computer.

You determine when the password is required within the BIOS Features Setup Menu and its Security option (see Section 3). If the Security option is set to password, then the password will be required both at boot and at entry to Setup. If set to "Setup", prompting only occurs when trying to enter Setup.

4.16 Exit Selecting

Save & Exit Setup

Pressing <Enter> on this item asks for confirmation:

Save to CMOS and EXIT (Y/N)? Y

Pressing "Y" stores the selections made in the menus in CMOS – a special section of memory that stays on after you turn your system off. The next time you boot your computer, the BIOS configures your system according to the Setup selections stored in CMOS. After saving the values the system is restarted again.

Exit Without Saving

Pressing <Enter> on this item asks for confirmation:

Quit without saving (Y/N)? Y

This allows you to exit Setup without storing in CMOS any change. The previously saved selections remain in effect. This exits the Setup utility and restarts your computer.

Appendix A. Watch-Dog Timer

The Watchdog Timer is a device to ensure that standalone systems can always recover from abnormal conditions that cause the system to crash. These conditions may result from an external EMI or a software bug. When the system stops working, hardware on the board will perform a hardware reset (cold boot) to bring the system back to a known state.

Three I/O ports control the operation of Watch-Dog Timer.

443 (hex)	Write	Set Watchdog Time period
443 (hex)	Read	Enable the refresh the Watchdog Timer.
043/843 (hex)	Read	Disable the Watch-Dog Timer.

Prior to enabling the Watch-Dog Timer, the user should set the time-out period. The resolution of the timer is 1 second and the range of the timer is from 1 to 255 sec. You need to send the time-out value to the I/O port – 443H, and then enable it by reading data from the same I/O port – 443H. This will activate the timer that will eventually time out and reset the CPU board. To ensure that this reset condition does not occur, the Watch-Dog Timer must be periodically refreshed by reading the same I/O port 443H. This must be done within the time-out period, please refer to the example program. Finally, be sure to disable the Watch-Dog timer by reading the I/O port -- 843H or 043H, otherwise the system could reset unconditionally.

A tolerance of at least 5% must be maintained to avoid unknown routines in the operating system (DOS), such as disk I/O that can be very time-consuming. Therefore if the time-out period has been set to 10 seconds, the I/O port 443H must be read within 7 seconds.

Example assembly program:

```
TIMER_PORT = 443H
TIMER_START = 443H
TIMER_STOP = 843H
```

;;INITIAL TIMER COUNTER

```
MOV DX, TIMER_PORT
MOV AL, 8 ;;8 seconds
OUT DX, AL
MOV DX, TIMER_START
IN AL, DX. ;;start counter
```

```
W_LOOP:
MOV DX, TIMER_STOP
IN AL, DX
MOV DX, TIMER_START
IN AL, DX ;;restart counter
```

;;ADD YOUR APPLICATION HERE

```
CMP EXIT_AP, 0
JNE W_LOOP
MOV DX, TIMER_STOP
IN AL, DX
;;EXIT AP
```

Appendix B. POST Messages

POST Messages

During the Power On Self Test (POST), if the BIOS detects an error requiring you to fix something, it will either sound a beep code or display a message.

If a message is displayed, it will be accompanied by:

PRESS F1 TO CONTINUE, CTRL-ALT-ESC OR DEL TO ENTER SETUP

POST Beep

Currently there are two kinds of beep codes in BIOS. This code indicates that a video error has occurred and the BIOS cannot initialize the video screen to display any additional information. This beep code consists of a single long beep followed by three short beeps. The other code indicates that a DRAM error has occurred. This beep code consists of a single long beep repeatedly.

Error Messages

One or more of the following messages may be displayed if the BIOS detects an error during the POST. This list includes messages for both the ISA and the EISA BIOS.

CMOS BATTERY HAS FAILED

CMOS battery is no longer functional. It should be replaced.

CMOS CHECKSUM ERROR

Checksum of CMOS is incorrect. This could mean that CMOS has become corrupt. This error may have been caused by a weak battery. Check the battery and replace if necessary.

DISK BOOT FAILURE, INSERT SYSTEM DISK AND PRESS ENTER

No boot device was found. This could mean that either a boot drive was not detected or the drive does not contain proper system boot files. Insert a system disk into Drive A: and press <Enter>. If you assumed the system would boot from the hard drive, make sure the controller is inserted correctly and all cables are properly attached. Also be sure the disk is formatted as a boot device. Then reboot the system.

DISKETTE DRIVES OR TYPES MISMATCH ERROR - RUN SETUP

Type of diskette drive installed in the system is different from the CMOS definition. Run Setup to reconfigure the drive type correctly.

DISPLAY SWITCH IS SET INCORRECTLY

Display switch on the motherboard can be set to either monochrome or color. This indicates the switch is set to a setting different to the one indicated in Setup. Determine which setting is correct, and then either turn off the system and change the jumper, or enter Setup and change the VIDEO selection.

DISPLAY TYPE HAS CHANGED SINCE LAST BOOT

Since last powering off the system, the display adapter has been changed. You must configure the system for the new display type.

EISA Configuration Checksum Error PLEASE RUN EISA CONFIGURATION UTILITY

The EISA non-volatile RAM checksum is incorrect or cannot correctly read the EISA slot. This can indicate either the EISA non-volatile memory has become corrupt or the slot has been configured incorrectly. Also be sure the card is installed firmly in the slot.

EISA Configuration Is Not Complete PLEASE RUN EISA CONFIGURATION UTILITY

The slot configuration information stored in the EISA non-volatile memory is incomplete.

Note: When either of these errors appear, the system will boot in ISA mode, which allows you to run the EISA Configuration Utility.

ERROR ENCOUNTERED INITIALIZING HARD DRIVE

Hard drive cannot be initialized. Be sure the adapter is installed correctly and all cables are correctly and firmly attached. Also be sure the correct hard drive type is selected in Setup.

ERROR INITIALIZING HARD DISK CONTROLLER

Cannot initialize controller. Make sure the cord is correctly and firmly installed in the bus. Be sure the correct hard drive type is selected in Setup. Also check to see if any jumper needs to be set correctly on the hard drive.

FLOPPY DISK CNTRLR ERROR OR NO CNTRLR PRESENT

Cannot find or initialize the floppy drive controller. make sure the controller is installed correctly and firmly. If there are no floppy drives installed, be sure the Diskette Drive selection in Setup is set to NONE.

Invalid EISA Configuration

PLEASE RUN EISA CONFIGURATION UTILITY

The non-volatile memory containing EISA configuration information was programmed incorrectly or has become corrupt. Re-run EISA configuration utility to correctly program the memory.

NOTE: When this error appears, the system will boot in ISA mode, which allows you to run the EISA Configuration Utility.

KEYBOARD ERROR OR NO KEYBOARD PRESENT

Cannot initialize the keyboard. Make sure the keyboard is attached correctly and no keys are being pressed during the boot.

If you are purposely configuring the system without a keyboard, set the error halt condition in Setup to HALT ON ALL, BUT KEYBOARD. This will cause the BIOS to ignore the missing keyboard and continue the boot.

Memory Address Error at ...

Indicates a memory address error at a specific location. You can use this location along with the memory map for your system to find and replace the bad memory chips.

Memory parity Error at ...

Indicates a memory parity error at a specific location. You can use this location along with the memory map for your system to find and replace the bad memory chips.

MEMORY SIZE HAS CHANGED SINCE LAST BOOT

Memory has been added or removed since the last boot. In EISA mode use Configuration Utility to reconfigure the memory configuration. In ISA mode enter Setup and enter the new memory size in the memory fields.

Memory Verify Error at ...

Indicates an error verifying a value already written to memory. Use the location along with your system's memory map to locate the bad chip.

OFFENDING ADDRESS NOT FOUND

This message is used in conjunction with the I/O CHANNEL CHECK and RAM PARITY ERROR messages when the segment that has caused the problem cannot be isolated.

OFFENDING SEGMENT:

This message is used in conjunction with the I/O CHANNEL CHECK and RAM PARITY ERROR messages when the segment that has caused the problem has been isolated.

PRESS A KEY TO REBOOT

This will be displayed at the bottom of the screen when an error occurs that requires you to reboot. Press any key and the system will reboot.

PRESS F1 TO DISABLE NMI, F2 TO REBOOT

When BIOS detects a Non-maskable Interrupt condition during boot, this will allow you to disable NMI and continue to boot, or you can reboot the system with NMI enabled.

RAM PARITY ERROR - CHECKING FOR SEGMENT ...

Indicates a parity error in the RAM (Random Access Memory).

Should Be Empty But EISA Board Found

PLEASE RUN EISA CONFIGURATION UTILITY

A valid board ID was found in a slot that was configured as having no board ID.

NOTE: When this error appears, the system will boot in ISA mode, which allows you to run the EISA Configuration Utility.

Should Have EISA Board But Not Found

PLEASE RUN EISA CONFIGURATION UTILITY

The board installed is not responding to the ID request, or no board ID has been found in the indicated slot.

NOTE: When this error appears, the system will boot in ISA mode, which allows you to run the EISA Configuration Utility.

Slot Not Empty

Indicates that a slot designated as empty by the EISA Configuration Utility actually contains a board.

NOTE: When this error appears, the system will boot in ISA mode, which allows you to run the EISA Configuration Utility.

SYSTEM HALTED, (CTRL-ALT-DEL) TO REBOOT ...

Indicates the present boot attempt has been aborted and the system must be rebooted. Press and hold down the CTRL and ALT keys and press DEL.

Wrong Board In Slot

PLEASE RUN EISA CONFIGURATION UTILITY

The board ID does not match the ID stored in the EISA non-volatile memory.

NOTE: When this error appears, the system will boot in ISA mode, which allows you to run the EISA Configuration Utility.

FLOPPY DISK(S) fail (80) → Unable to reset floppy subsystem.

FLOPPY DISK(S) fail (40) → Floppy Type mismatch.

Hard Disk(s) fail (80) → HDD reset failed

Hard Disk(s) fail (40) → HDD controller diagnostics failed.

Hard Disk(s) fail (20) → HDD initialization error.

Hard Disk(s) fail (10) → Unable to recalibrate fixed disk.

Hard Disk(s) fail (08) → Sector Verify failed.

Keyboard is locked out - Unlock the key.

BIOS has detected the keyboard is locked. P17 of keyboard controller is pulled low.

Keyboard error or no keyboard present.

Cannot initialize the keyboard. Make sure the keyboard is attached correctly and no keys are being pressed during the boot.

Manufacturing POST loop.

System will repeat POST procedure infinitely while the P15 of keyboard controller is low. This is also used for M/B burn-in test.

BIOS ROM checksum error - System halted.

The checksum of ROM address F0000H-FFFFFH is bad.

Memory test fail.

BIOS reports the memory test fail if the onboard memory detects an error.

Appendix C.

DMA, IRQ and 1st MB Memory

I/O Address Map

DMA Channel Assignments:

DMA Channel #	Description
0	Available
1	Available
2	Floppy Disk (8-bit transfer)
3	Available
4	Cascade for DMA controller 1
5	Sound
6	Available
7	Available

IRQ Mapping Chart

IRQ0	System Timer	IRQ8	RTC Clock
IRQ1	Keyboard	IRQ9	USB
IRQ2	Cascade to IRQ Controller	IRQ10	LAN1
IRQ3	(COM2)	IRQ11	LAN2
IRQ4	(COM1)	IRQ12	PS/2 Mouse
IRQ5	Sound	IRQ13	FPU
IRQ6	FDC	IRQ14	Primary IDE
IRQ7	LPT1	IRQ15	Secondary IDE

Note: All IRQs have been assigned to the listed devices, so if you want to add any additional device interface, you must free the unused IRQ first. For example, if you don't use USB K/B or Mouse, then IRQ9 may be set free.

1st MB Memory Address Map

Memory Address	Description
00000-9FFFF	System Board extension for ACPI BIOS
A0000-CFFFF	SIS630
D0000-DFFFF	Free
F0000-FFFFFF	System Board extension for ACPI BIOS

I/O Address Map

I/O Address Range	Description
000-01F	DMA Controller #1
020-021	Interrupt Controller #1, Master
040-05F	8254 Timer
060-06F	8042 (Keyboard Controller)
070-07F	Real Time Clock, NMI Mask
080-09F	DMA Page Register
0A0-0BF	Interrupt Controller #2
0C0-0DF	DMA Controller #2
0F0	Clear Math Coprocessor Busy
0F1	Reset Math Coprocessor
0F8-0FF	Math Coprocessor
170-177	Fixed Disk
1F0-1F7	
2F8-2FF	Serial Port 2 (COM2)
378-37F	Parallel Printer Port 1 (LPT1)
380-38F	SDLC, Bisynchronous 2
3A0-3AF	Bisynchronous 1
3B0-3BB	SIS 630
3C0-3DF	SIS 630
3F0-3F7	Diskette Controller
3F8-3FF	Serial Port 1 (COM1)
443, 843	Watch-dog timer

Appendix D.

How to Upgrade a New BIOS

You can install an upgrade BIOS for the CPU Board after downloading from the manufacturer's web site (www.iei.com.tw). New BIOS may provide support for new peripherals, improvements in performance or fixes to addressed known bugs.

BIOS Update Procedure:

1. Make a boot disk. Go to the DOS command prompt in MS-DOS or Windows 9x and, with an available floppy disk in "A", type "format A: /s" That will format the floppy and transfer the needed system files to it.

NOTES:

A. This procedure will erase any prior data on that floppy, so please proceed accordingly.
B. Typically four files will be transferred, only COMMAND.COM being visible when running a simple directory listing.
C. Please leave the diskette UN-write protected for the balance of this procedure.

2. Download the BIOS upgrade file and awdfash.exe utility from an ICP web site to a temp directory on your hard drive, or directly to the floppy you made in step 1..

3. Copy (BIOS file and awdfash.exe) two files to the boot floppy.

4. Reboot the system to the DOS command prompt using the boot diskette you just made.

5. At the DOS command prompt, type "awdfash filename.xxx",

where filename.xxx is the file name of the BIOS file. Press enter.

6. Your first option, in sequence, will be to save the old BIOS. We recommend that you do that in case, for whatever reason, you decide you don't wish to use the new version once it is installed.

NOTES:

A. If you decide to save the old BIOS, PLEASE make sure you do NOT save it to the same file name as the new BIOS - if you use the same BIOS name the old file will be written over the new file with NO warning prompt. A simple file name to save the old BIOS under is OLDBIOS.BIN.

B. If you do NOT decide to save the old BIOS, PLEASE at least write down the version number of the old BIOS and store that information with your important computer documents. Enter N (for "no") and skip to step 9.

7. To save the old BIOS, hit Y (for "yes")

8. Enter a name for the OLD BIOS file and hit enter.

NOTE:PLEASE be sure you do NOT save the old BIOS file to the same file name as the new BIOS - if you use the same BIOS name, the old file will write over the new BIOS file WITHOUT a warning prompt. A simple file name for saving the old BIOS under is OLDBIOS.BIN.

9. Your second option, in sequence, will be whether or not you want to flash your BIOS. Enter Y (for "yes").

NOTE: This is a critical step. Once you press the enter key, do NOT touch the keyboard, the reset button, or the power switch while the flashing is in progress. There will be bar progressing across the screen while the flashing is taking place.

10. When the flashing process is complete, you will be asked to reset or power off the system. Remove the floppy diskette from the

floppy drive and either hit the reset button or the power button.

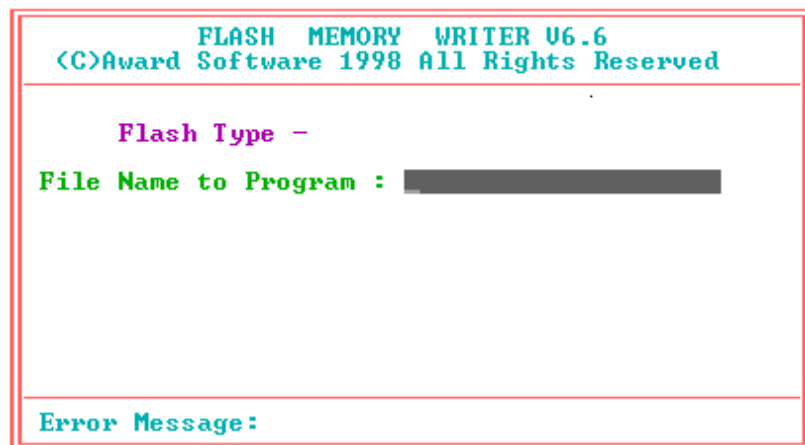
11. Reboot the system and note that the BIOS version on the initial boot-up screen has changed to the new BIOS version. Your BIOS upgrade is now complete.

Recovering Your Old BIOS:

1. Assuming you have made a back-up of the old BIOS on the floppy during the upgrade procedure noted above, boot the system with that diskette in the floppy drive. If you have not backed up to a floppy during the upgrade procedure noted above, you will need to repeat steps 1 through 3 (above) for the version of the BIOS you wish to recover to.

2. Complete steps 4, 5, 6B, 9, 10, and 11 (above) substituting the name of the BIOS you wish to recover for the upgrade BIOS at step 5.

Install screen :



Appendix E. Digital Input / Output

NOVA-7895 has a 4-bit IN and 4-bit OUT built-in digital I/O connector. An external power supply to the connector's pin-9 and pin-10 is needed to activate the digital I/O circuit. The external power supply's DC output should be connected with NOVA-7895's power supply at either 5V, 12V or GND to isolate NOVA-7895 main system and the external I/O device. Should you not be able to find any external power supply to activate the digital I/O, the 5V or 12V of the system's power supply can be used. Under this condition, the digital I/O is not isolated.

• Digital Input / Output Address

• Read port 709 : Digital Input

Bit	Value
0 – 3	0 – F

• Write port 708 : Digital Output

Bit	Value
4 – 7	0 – F

External Voltage Input : 0V – 20V

(CN11 Pin 10)

External Power GND Pin

(CN11 PIN 9)

Digital Input specifications

(If External Voltage is 5V)

Logic 0 Level : +1V Max

Logic 1 Level : +4V Min

(If External Voltage is 12V)

Logic 0 Level : +1V max
 Logic 1 Level : +11V min

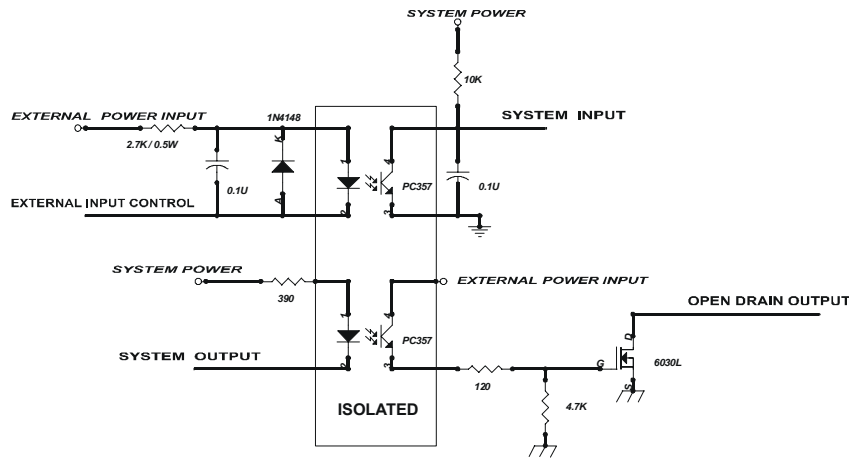
Input Impedance : 2.7KΩ , 0.5 W

Digital Output specifications:

Open Drain to 20V Max
 Output Current : 700mA Max (per channel)
 (External Power Input is 5V)

Output Current : 700mA Max (per channel)
 (External Power Input is 12V)

Digital Input / Output Circuit Diagram



Flat Panel Connection Module

The FP24-02 V1.0 connection module is installed on the NOVA-7895 as standard. The FP24-02 V1.0 converts NOVA-7895's on board 50pin LCD interface signal to the 44-pin LCD connectors. The 44-pin connector will only support a 24-bit flat panel. The major function of FP24-02 V1.0 is to enhance the drive strength of LCD signal to provide NOVA-7895 with a better connection.

• **J3 : 44-pin LCD Interface Connector**

PIN NO.	DESCRIPTION	PIN NO.	DESCRIPTION
1	+12V	2	+12V
3	GND	4	GND
5	3.3V	6	3.3V
7	FPVEE	8	GND
9	P0	10	P1
11	P2	12	P3
13	P4	14	P5
15	P6	16	P7
17	P8	18	P9
19	P10	20	P11
21	P12	22	P13
23	P14	24	P15
25	P16	26	P17
27	P18	28	P19
29	P20	30	P21
31	P22	32	P23
33	GND	34	GND
35	SHFCLK	36	FLM
37	M	38	LP
39	GND	40	ENABKL
41	NC	42	NC
43	FPVDD	44	3.3V

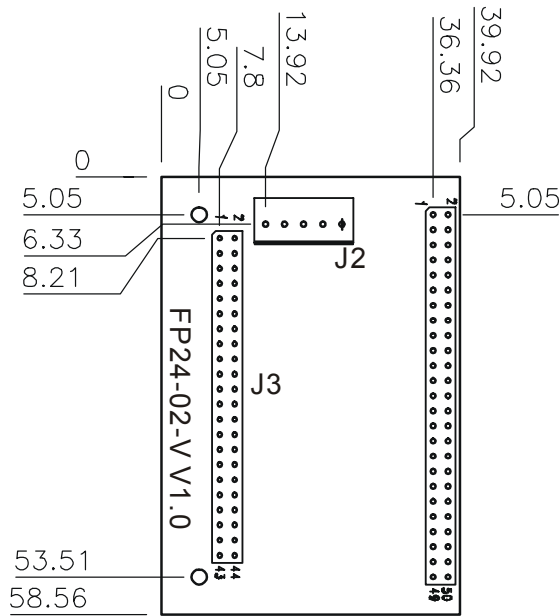
• **J2 : LCD Backlight Power Connector**

PIN NO.	DESCRIPTION
---------	-------------

Appendix F.

1	N/C
2	GND
3	+12V
4	GND
5	FPVEE Inverter Enable

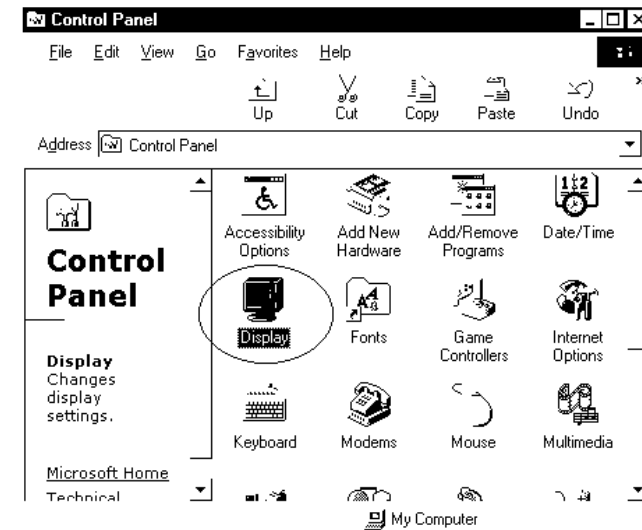
FP24-02-V V1.0 Dimension (Unit : mm)



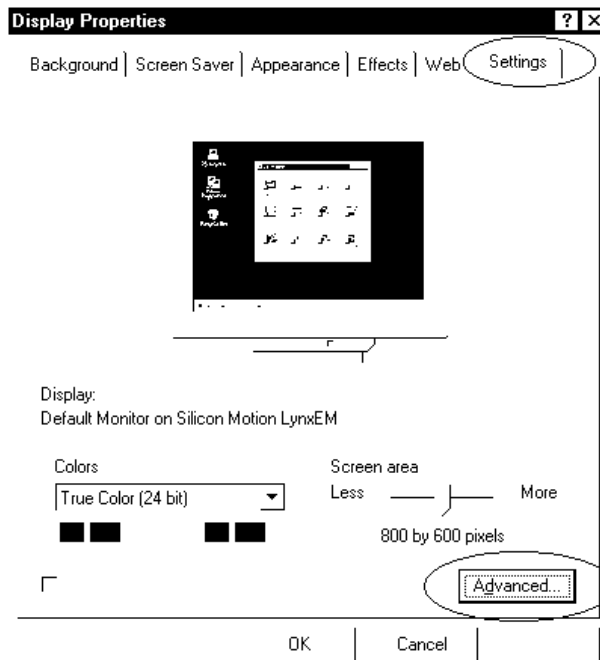
Appendix G. Dual View Setup

The NOVA-7895 is equipped with an OnChip SIS300 VGA chip which supports dual view function. It allows you to run two applications on two monitors respectively. The following will describe how to enable the dual-view function in WINDOWS.

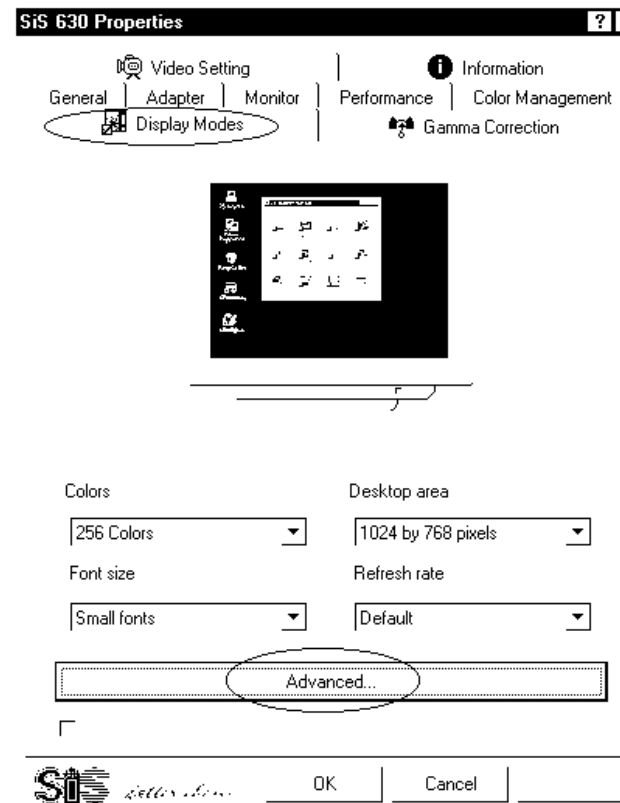
1. Select "Display" in Control Panel and enter "Display Properties".



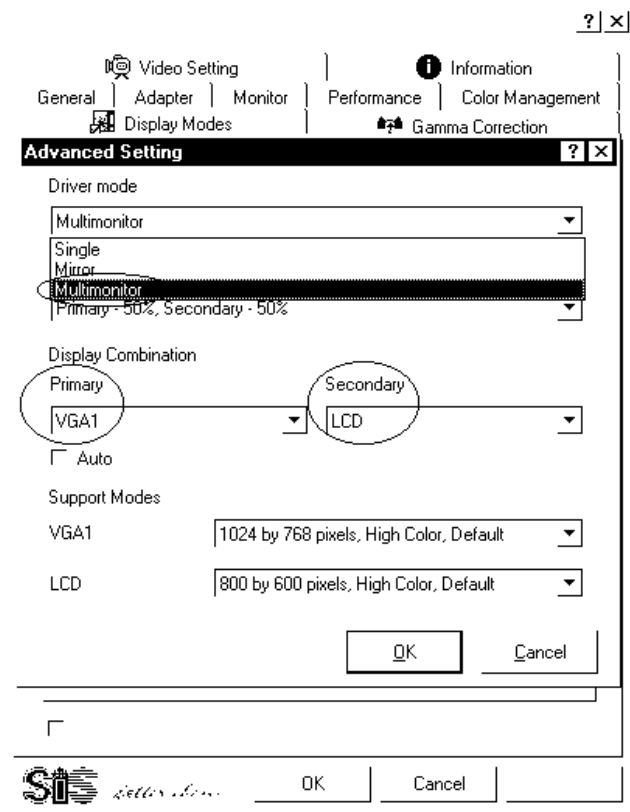
2. Select the item “Settings” and click on the “Advanced” button



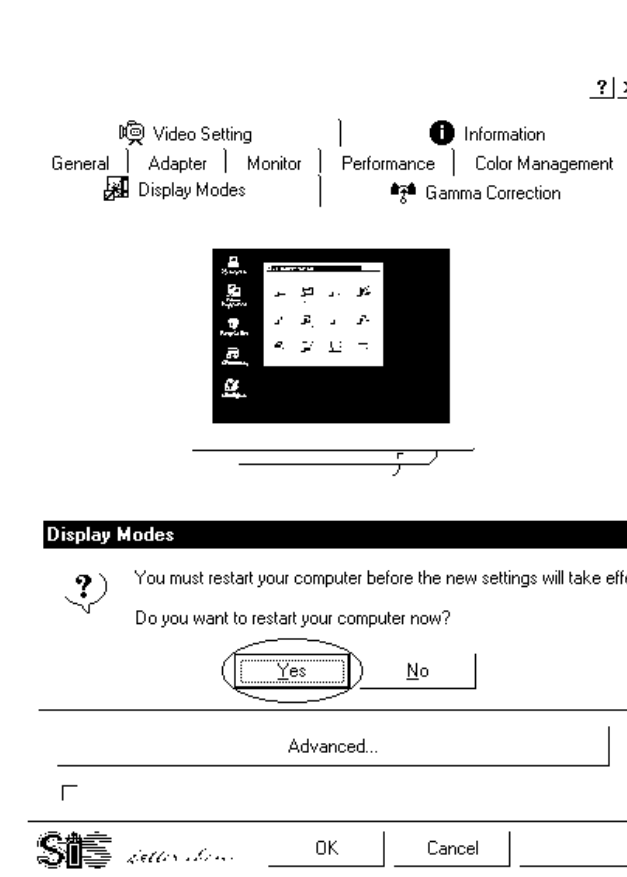
3. Select the item “Display Modes” and click on the “Advanced” button



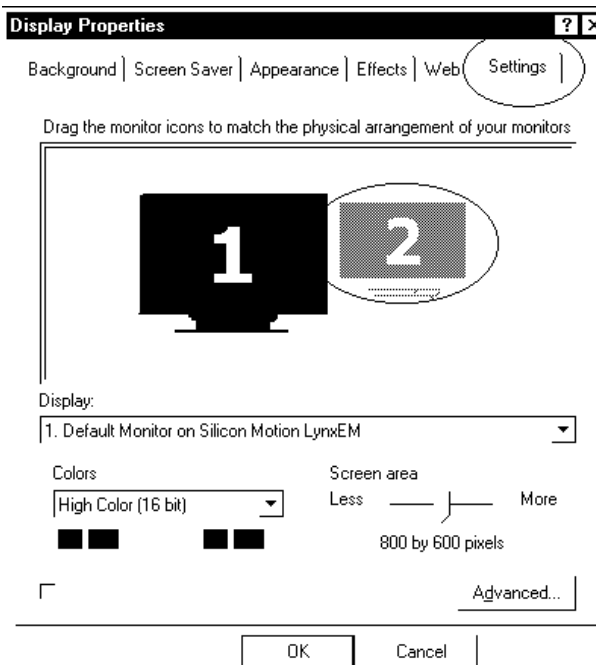
4. Select the item “Multimonitor” in “Driver Mode” and select the Display combination of primary and secondary display.



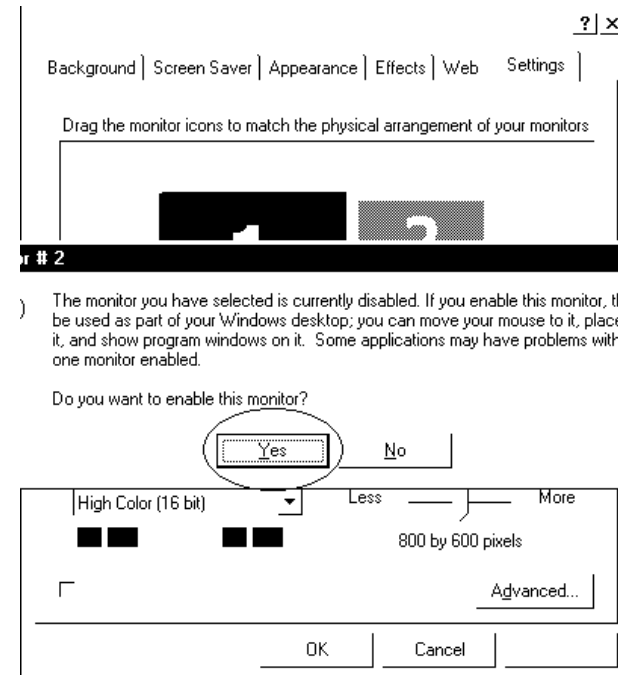
5. After everything is set up, you need to restart your computer in order for the new settings to take effect.



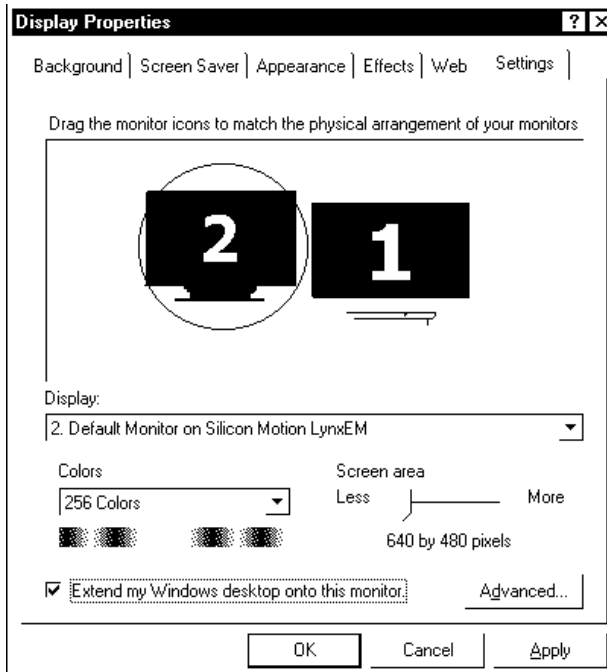
6. Re-enter “Display Properties” and go to the item “Settings”. You will be able to see two monitors on the screen.



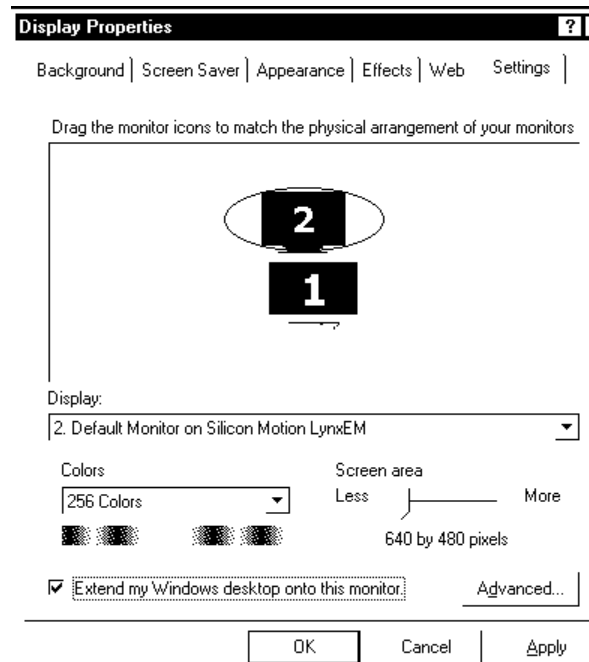
7. Click on the second monitor icon and Windows will ask you if you want to enable the second monitor. Click “Yes” to enable the second monitor .



8. After enabling the second monitor, you will be able to see an image on the second monitor. Then you can drag the monitor icons to arrange the display of your monitors in the way of left-right or up-and-down alignment. The screen below is left-and-right alignment.



9. Up-and-down alignment.



10. If you want to disable the dual-view function, just click on the item “Extend my Windows desktop onto this monitor”. The mark before this item will be cancelled and the dual-view function is disabled.

