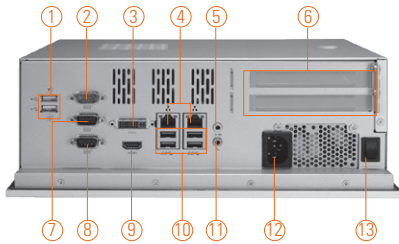
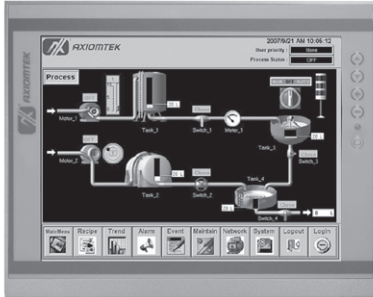


P1127E-871

12.1" XGA TFT Intel® Core™ i7/i5/i3, Celeron® & Pentium® Expandable Industrial Touch Panel Computer with 2 PCIe or 2 PCI Slots



- | | |
|---|-----------------------------|
| 1. USB 2.0 x 2 | 8. COM 2 (RS-232) |
| 2. COM 3 with 5V & 12V (RS-232) | 9. HDMI |
| 3. DVI-I | 10. USB 3.0 x 4 |
| 4. Ethernet x 2 | 11. Audio (MIC-in) |
| 5. Audio (Line-out) | 12. AC plug |
| 6. PCIe x8 x 2 or PCI x 2 | 13. Switch for power on/off |
| 7. COM 1 with 5V & 12V (RS-232/422/485) | |



Introduction

The P1127E-871 is a multimedia 12.1" touch panel PC for kiosk application. It has a fashionable mechanism design and industrial-grade material front bezel which can avoid damage from chemical corrosion. To meet the demands of multimedia application, the P1127E-871 is powered by a high performance 3rd & 2nd generation Intel® Core™ i7/i5/i3, Celeron®, Pentium® & Xeon® processors with the Intel® C216 chipset. It features three COM ports, two Gigabit Ethernet and up to 16GB memory of dual-channel DDR3 that delivers high computing capability for high performance-demanding applications. The industrial panel PC is most suitable for kiosk, factory and automation.

Dual Monitor Display

The P1127E-871 supports DVI or HDMI simultaneously that features the use of dual display devices for increasing the area available for programs running on a single computer system. It not only increases larger screen viewing but also improves the productivity.

Expandable for 2 PCIe or 2 PCI

The P1127E-871 has 2 PCIe x8 or 2 PCI slots for expansion purpose. User can easily plug in standard half-size PCI or PCIe card for any requirement.

Speaker and WLAN Antenna Supported

The P1127E-871 features built-in speakers for kiosk application to display multimedia content program. It also supports WLAN module antenna (optional) for wireless network connectivity.

Friendly Less Screw Design

Removing the back cover to maintain the system in unscrewing 3 screws only that saving your time and increasing our work efficiency many times.

Features

- 12.1" XGA TFT LCD display
- LGA1155 socket 3rd & 2nd generation Intel® Core™ i7/i5/i3, Celeron®, Pentium® & Xeon® processor
- Intel® C216 chipset
- Easy installation: Less screw design for user's convenience
- 4 USB 3.0, 2 USB 2.0 and 3 COM ports
- Flexible expansion interface (two PCIe or two PCI slots)
- Built-in speakers and optional Wi-Fi 802.11 b/g/n module
- Robust aluminum with IP65 compliant front bezel design



▲ Side view

Specifications

Front Bezel	Aluminum w/ IP65/NEMA 4 rugged protection	
LCD Panel	Display Type	12.1" XGA TFT LCD
	Brightness	500 nits
	Resolution	1024 x 768 pixels
	Viewing Angle	160°/140°
Main System	CPU	LGA1155 socket 3rd & 2nd generation Intel® Core™ i7/i5/i3, Celeron®, Pentium® & Xeon® processor
	Chipset	Intel® C216
	System Memory	2 x 204-pin DDR3 SO-DIMM max. up to 16 GB
	BIOS	AMI UEFI BIOS with OA 3.0 built
	Storage	1 x 2.5" SATA HDD
	Watchdog Timer	255 levels, 1~255 sec.

* All specifications and photos are subject to change without notice.



Specifications

IO Connector	1 x RS-232 (COM 2) 1 x RS-232/422/485 with 5V & 12V (COM 1) 1 x RS-232 with 5V & 12V (COM 3) 1 x DVI-I 1 x HDMI 4 x USB 3.0 2 x USB 2.0 2 x 10/100/1000 Mbps Ethernet 1 x Audio (Mic-in/Line-out)
Expansion Interface	2 x PCIe x8 or 2 x PCI
Touchscreen	5-wire resistive type Light transmission 79% 1 million activations (typical) at a single point
Power Supply	100 ~ 240VAC, 270W
Dimensions	311.5 mm (12.26") (W) x 111.85 mm (4.4") (D) x 250 mm (9.84") (H)
Packing Dimension	510 mm (20.08") (W) x 190 mm (7.48") (D) x 540 mm (21.26") (H)
Weight(net/gross)	5 kg (11.02 lb)/7.1 kg (15.65 lb)
Environment	Operating Temperature: 0° ~ +45°C (+32°F ~ +113°F) Storage Temperature: -40°C ~ +80°C (-40°F ~ +176°F) Relative humidity: 10 ~ 90%@40°C, non-considering Operating vibration: 1.0G, 5-500Hz, random
Certificate	CE

Ordering Information

P1127E-871 w/ PCIe	12.1" XGA expandable industrial touch panel computer supports LGA1155 socket Intel® 3rd generation Core™ i7/ i5/i3, Xeon®, Pentium® & Celeron® processor, resistive touch screen, 2 PCIe x8 slot and 100~240VAC
P1127E-871 w/ PCI	12.1" XGA expandable industrial touch panel computer supports LGA1155 socket Intel® 3rd generation Core™ i7/ i5/i3, Xeon®, Pentium® & Celeron® processor, resistive touch screen, 2 PCI slot and 100~240VAC

* Specification and certifications are based on options and may vary.

Optional Accessories

82211271000E	Wireless LAN kit
82211270060E	VESA & WALL mount kit
E202003330	VM-101 (VESA ARM clamp type)
E202003329	VM-105 (VESA ARM wall-mount)

Optional OS Installation

Windows® XP/XPe
Windows® 7/8.1
Windows® Embedded 7/8

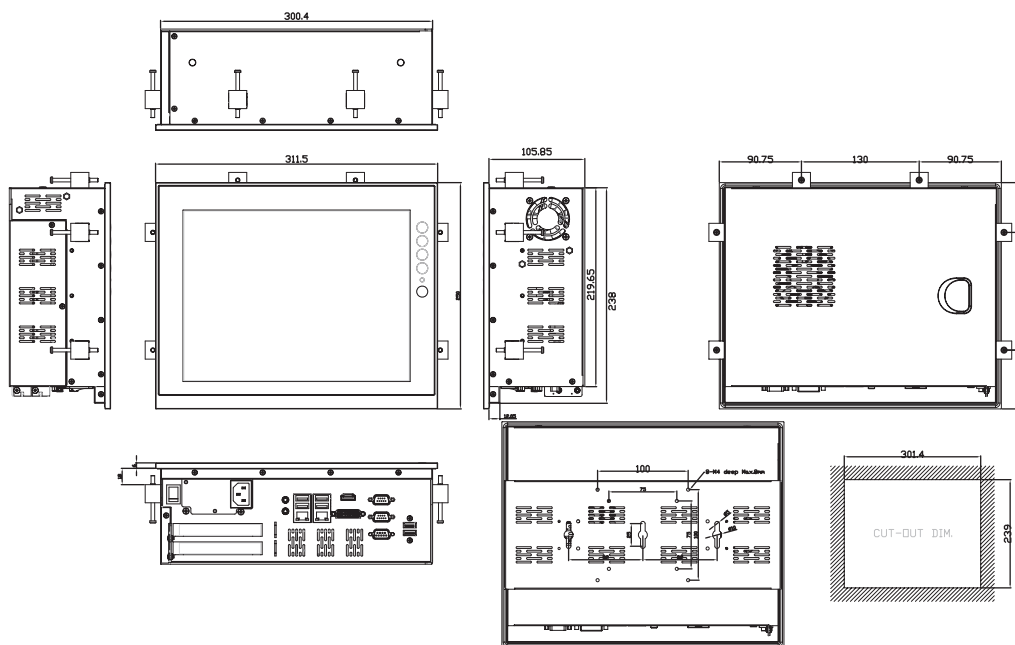


▲ Expandible design



▲ Less screw design

Dimensions



Overview

Fanless Touch Panel Computers

Heavy-duty Fanless Touch Panel Computers

3

Industrial Touch Panel Computers

Industrial Touch panel Monitors

Infotainment Touch Panel Computers

Healthcare & Medical Solutions

Open Frame Panel Computers

Accessories

