

VP-23W1 Quick Start Guide

Version 1.0.1, June 2009

Congratulations!

Congratulations on purchasing ViewPAC - the most popular automation panel solution for remote monitoring and control application, to give you all the best features of HMIs and PLCs. This Quick Start Guide will provide information needed to get started with ViewPAC. Please also consult the User Manual for detailed information on the setup and use of ViewPAC.

What's In the Box?

In addition to this guide, the package includes the following items:



VP-23W1



Software Utility CD



1 GB Micro SD Card



RJ-45 Waterproofing Kit



Panel Clips *5



Screw Driver

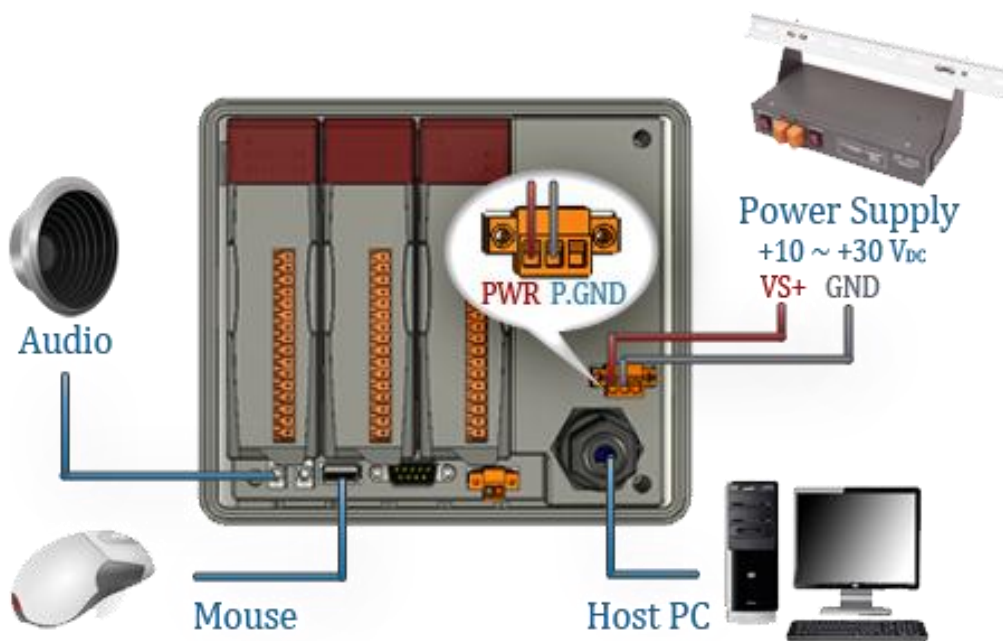
1 Configuring boot mode



Make sure the rotary switch is placed in the "0" position.

2 Setting up the power supply and Connect the mouse

Connect the positive terminal (+) of the power supply to the terminal PWR and the negative terminal (-) of the power supply to the P.GND.



Connect the mouse to the USB port.

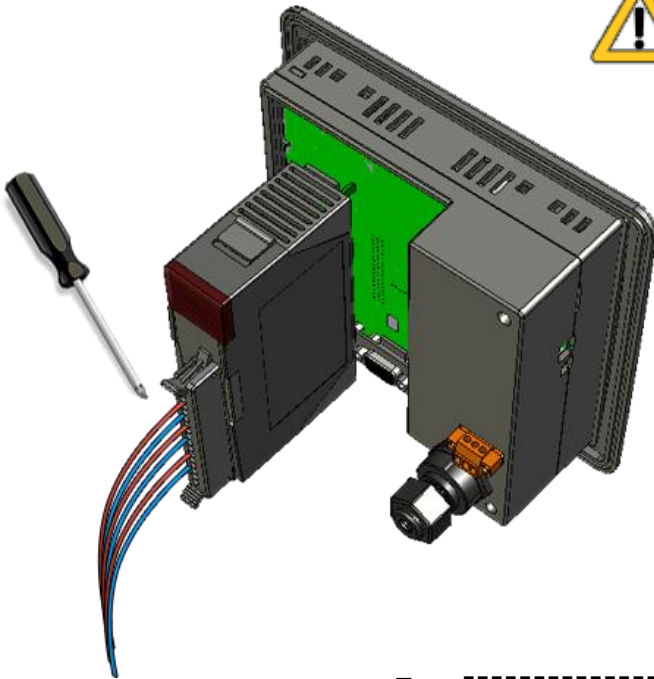


The input range of power supply is +10 ~ +30 V_{DC}

3 Inserting I/O modules



Only high profile I-8K and I-87K modules can be plugged.



4 Powering the View PAC

When you turn on your ViewPAC, it will automatically be on the Windows CE Welcome screen, it's almost as operational as Windows XP.

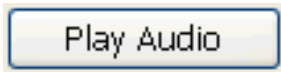


5 Start the ViewPAC Quick Test to check out the View PAC particular functions

View PAC combines Win PAC, graphic display and keypad dial in one unit. The ViewPAC Quick Test is a toolkit used to check out the View PAC particular function compared with Win PAC.

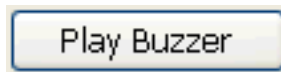


Audio Options:



Play Audio button is used to check the audio output.

Buzzer Options:



Play Buzzer button is used to check the buzzer.

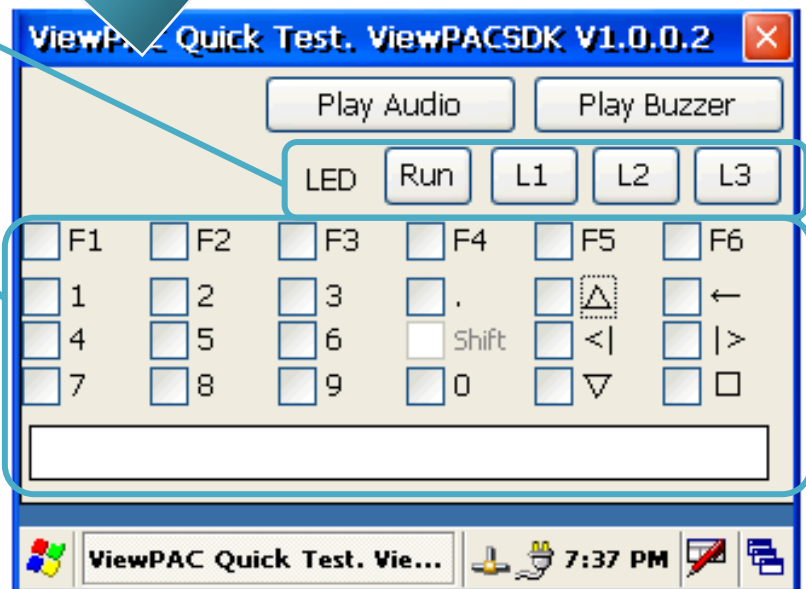
LED Options:

These buttons is used to check LEDs sign.

KeyPAD Option:

Checkboxes is used to check the KeyPAD.

Text field is used to check the input format.



The shift key is a modifier key used to enter alternate upper letters or characters.

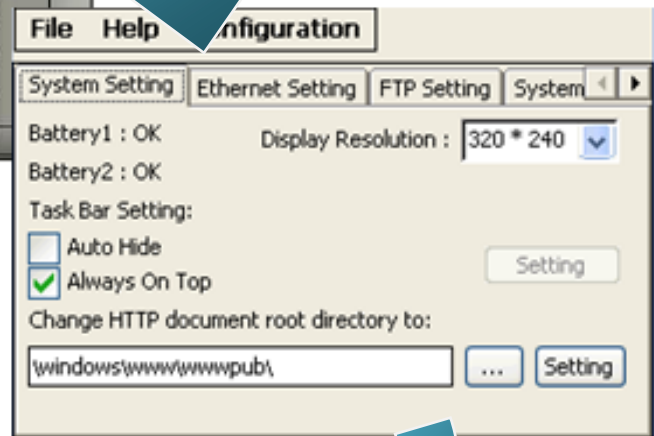
6 Start the ViewPAC Utility to manage the controller

The ViewPAC Utility is a toolkit used to quickly control and manage the View PAC.

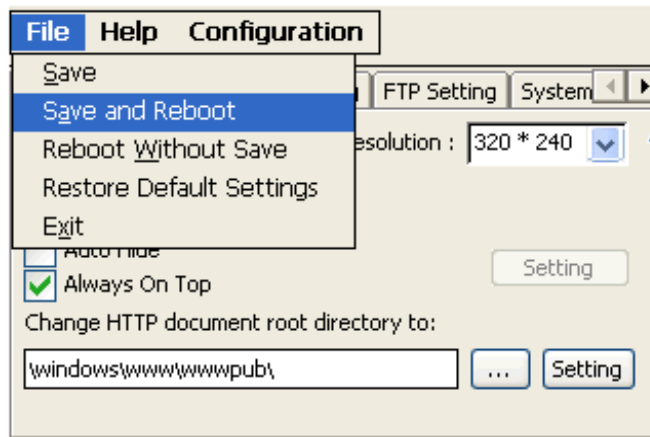
Step 1: Run the ViewPAC Utility located on desktop



Step 2: Configure IP address (DHCP), FTP Server, Auto Execution files..., etc



Step 3: Save and Reboot the View PAC



7

Start the DCON Utility to configure I-87K series modules

DCON Utility is a tool kit used to quickly control and manage I-87K series expansion I/O modules.

Step 1: Run the DCON firmware on the View PAC controller



The DCON firmware is located at:
\\System_Disk\\tools\\DCON_CE\\

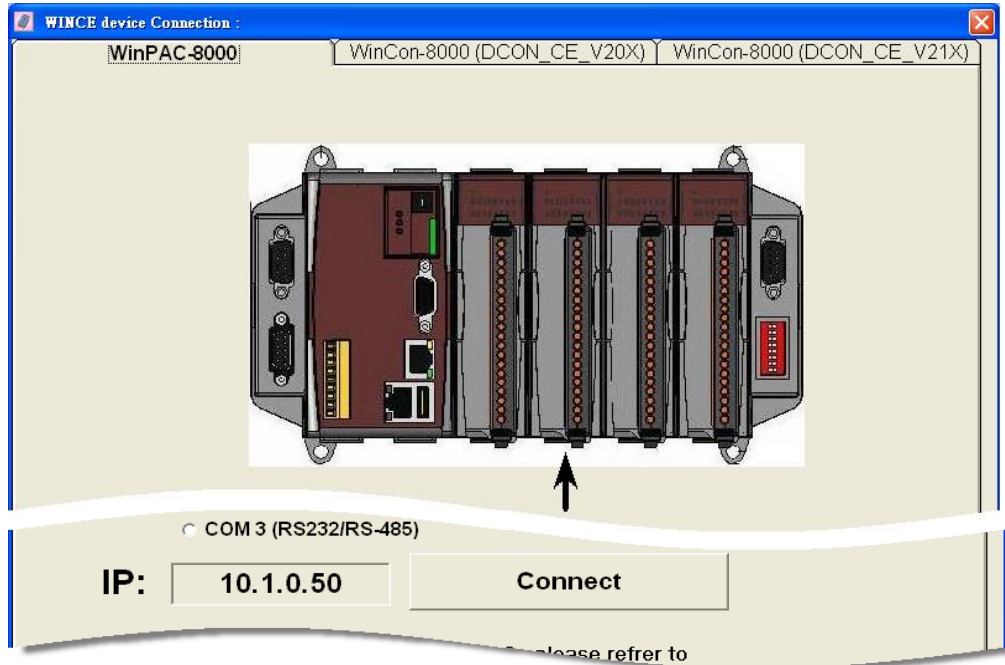
Step 2: Run the DCON Utility on the host PC



Step 3: Click the WIN CE button

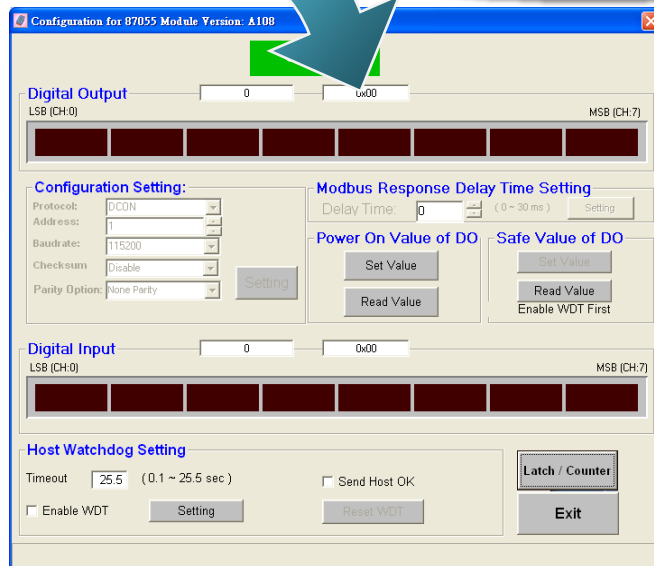


Step 4: On the WINCE device connection, enter the IP address of the View PAC to search the I-87K series expansion I/O modules



Step 5: It will display a list of I-87K series expansion I/O modules, then select the module name that you want to configure

module	Address	Baudrate	Checksum	format	Status	Description
WinCon8000	1[1]	115200	Disable	N,8,1		WinPAC8000 System(DCON)
xxxxx	S0	115200	Disable			[Parallel bus module] or [None]
xxxxx	S1	115200	Disable			[Parallel bus module] or [None]
xxxxx	S2	115200	Disable			[Parallel bus module] or [None]
xxxxx	S3	115200	Disable			[Parallel bus module] or [None]
xxxxx	S4	115200	Disable			[Parallel bus module] or [None]
xxxxx	S5	115200	Disable			[Parallel bus module] or [None]
xxxxx	S6	115200	Disable			[Parallel bus module] or [None]
xxxxx	S7	115200	Disable			[Parallel bus module] or [None]



Technical Support



➤ **VP-23W1 User Manual**

CD:\NAPDOS\vp-2000_ce50\Document\

http://ftp.icpdas.com/pub/cd/winpac/napdos/vp-2000_ce50/document/

➤ **VP-23W1 Demo References**

CD:\NAPDOS\vp-2000_ce50\Demo\

http://ftp.icpdas.com/pub/cd/winpac/napdos/vp-2000_ce50/demo/

➤ **View PAC Website**

<http://www.icpdas.com/products/PAC/viewpac/introduction.htm>

➤ **ICP DAS Website**

<http://www.icpdas.com/>