

# VP-25W1 Quick Start Guide

Version 1.0.2, July 2009

## Congratulations!

Congratulations on purchasing ViewPAC - the most popular automation panel solution for remote monitoring and control application, to give you all the best features of HMIs and PLCs. This Quick Start Guide will provide information needed to get started with ViewPAC. Please also consult the User Manual for detailed information on the setup and use of ViewPAC.

## What's In the Box?

In addition to this guide, the package includes the following items:



**VP-25W1 & Touch Pen**



**Software Utility CD**



**1 GB Micro SD Card**



**RJ-45 Waterproofing Kit**



**Panel Clips \*5**



**Screw Driver**

VP-25W1 Quick Start Guide

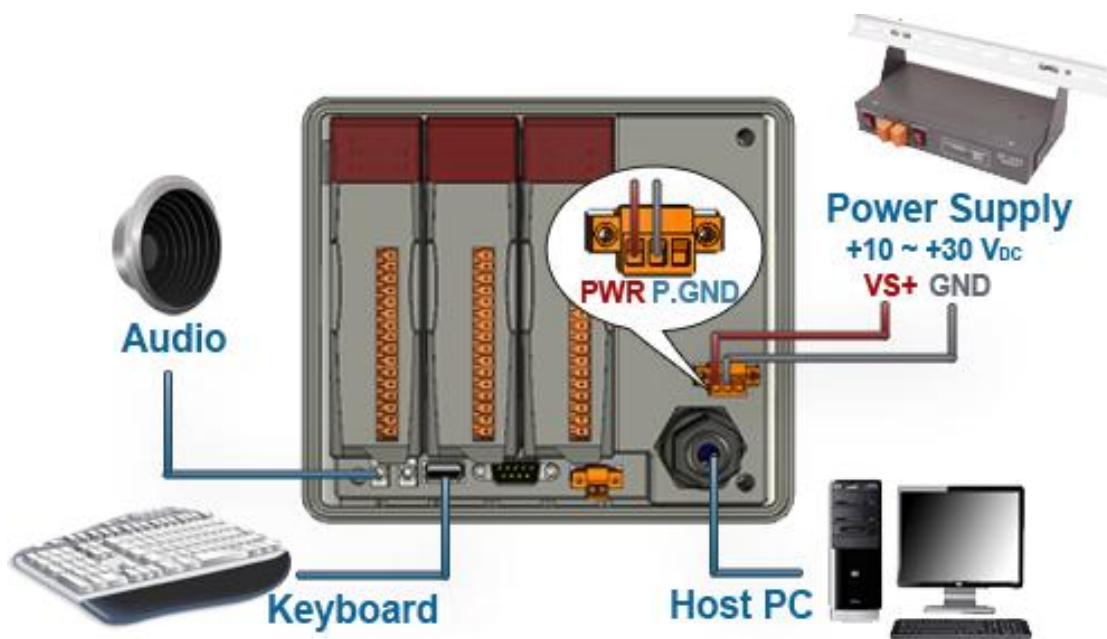
# 1 Configuring boot mode



Make sure the rotary switch is placed in the "0" position.

# 2 Setting up the power supply and Connect the mouse

Connect the positive terminal (+) of the power supply to the terminal PWR and the negative terminal (-) of the power supply to the P.GND.

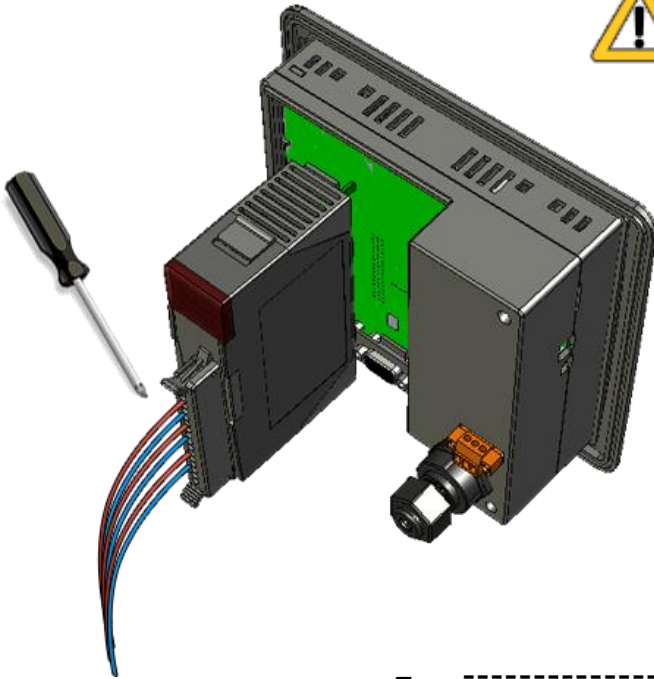


Connect the USB keyboard to the USB port.



The input range of power supply is  
 $+10 \sim +30 \text{ V}_{\text{DC}}$

# 3 Inserting I/O modules



Only high profile I-8K and I-87K modules can be plugged.

# 4 Powering the View PAC

When you turn on your ViewPAC, it will automatically be on the Windows CE Welcome screen, it's almost as operational as Windows XP.

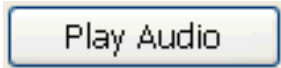


# 5 Start the ViewPAC Quick Test to check out the View PAC particular functions

View PAC combines Win PAC, graphic display and keypad dial in one unit. The ViewPAC Quick Test is a toolkit used to check out the View PAC particular function compared with Win PAC.

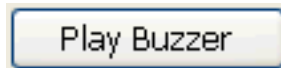


### Audio Options:



Play Audio button is used to check the audio output.

### Buzzer Options:



Play Buzzer button is used to check the buzzer.

### LED Options:

These buttons is used to check LEDs sign.

### KeyPAD Option:

Checkboxes is used to check the KeyPAD.

### LCD Backlight Option:

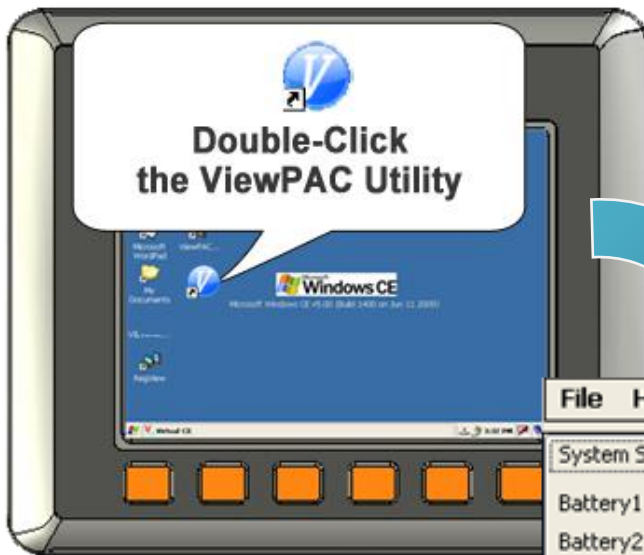
The slider is used to check the LCD backlight.



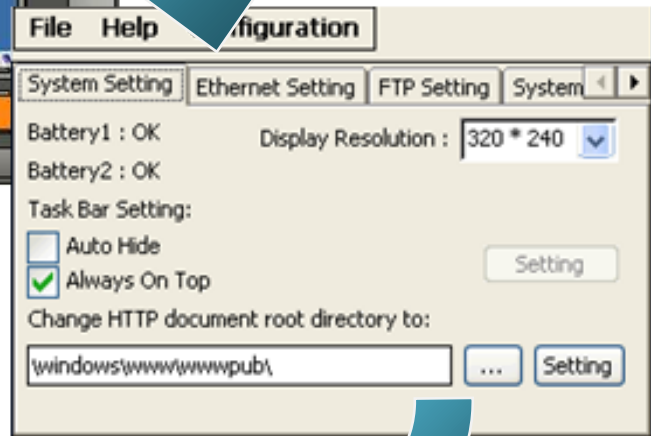
# 6 Start the ViewPAC Utility to manage the controller

The ViewPAC Utility is a toolkit used to quickly control and manage the View PAC.

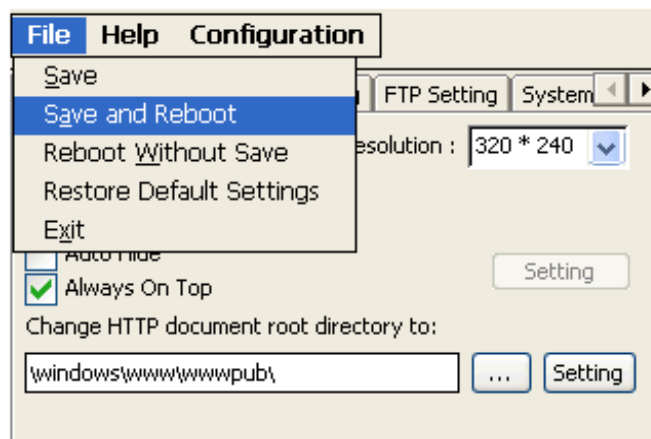
## Step 1: Run the ViewPAC Utility located on desktop



## Step 2: Configure IP address (DHCP), FTP Server, Auto Execution files..., etc



## Step 3: Save and Reboot the View PAC



# 7

## Start the DCON Utility to configure I-87K series modules

DCON Utility is a tool kit used to quickly control and manage I-87K series expansion I/O modules.

### Step 1: Run the DCON firmware on the View PAC controller

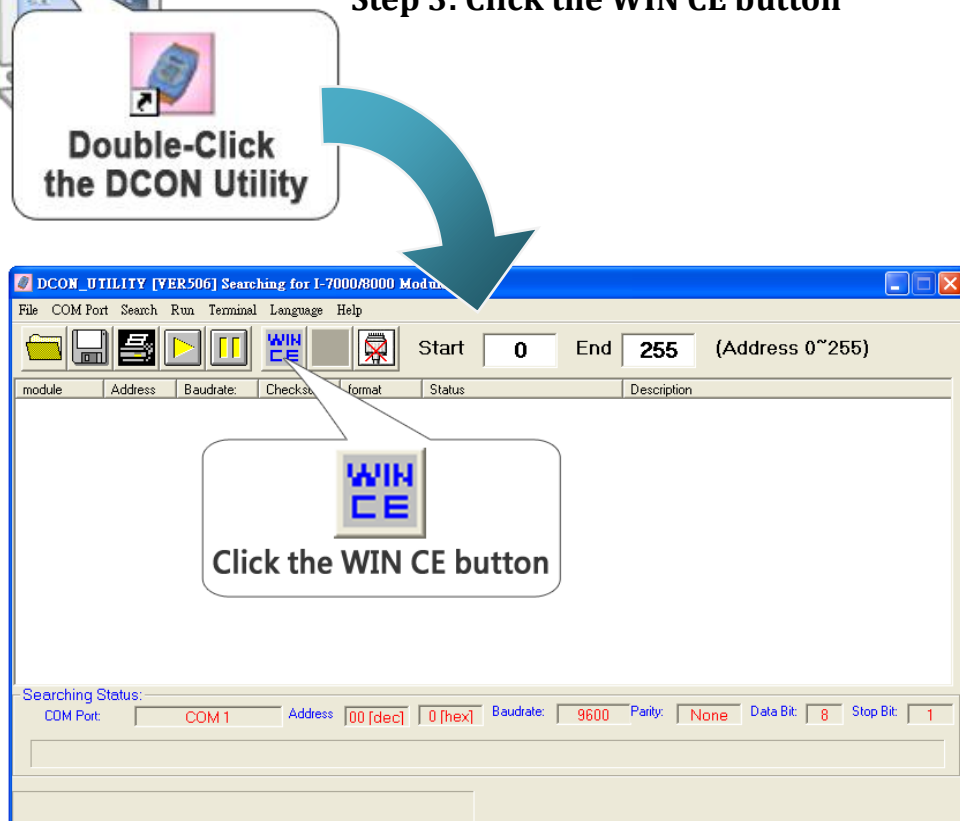


The DCON firmware is located at:  
\\System\_Disk\\tools\\DCON\_CE\\

### Step 2: Run the DCON Utility on the host PC



### Step 3: Click the WIN CE button



**Step 4: On the WINCE device connection, enter the IP address of the View PAC to search the I-87K series expansion I/O modules**



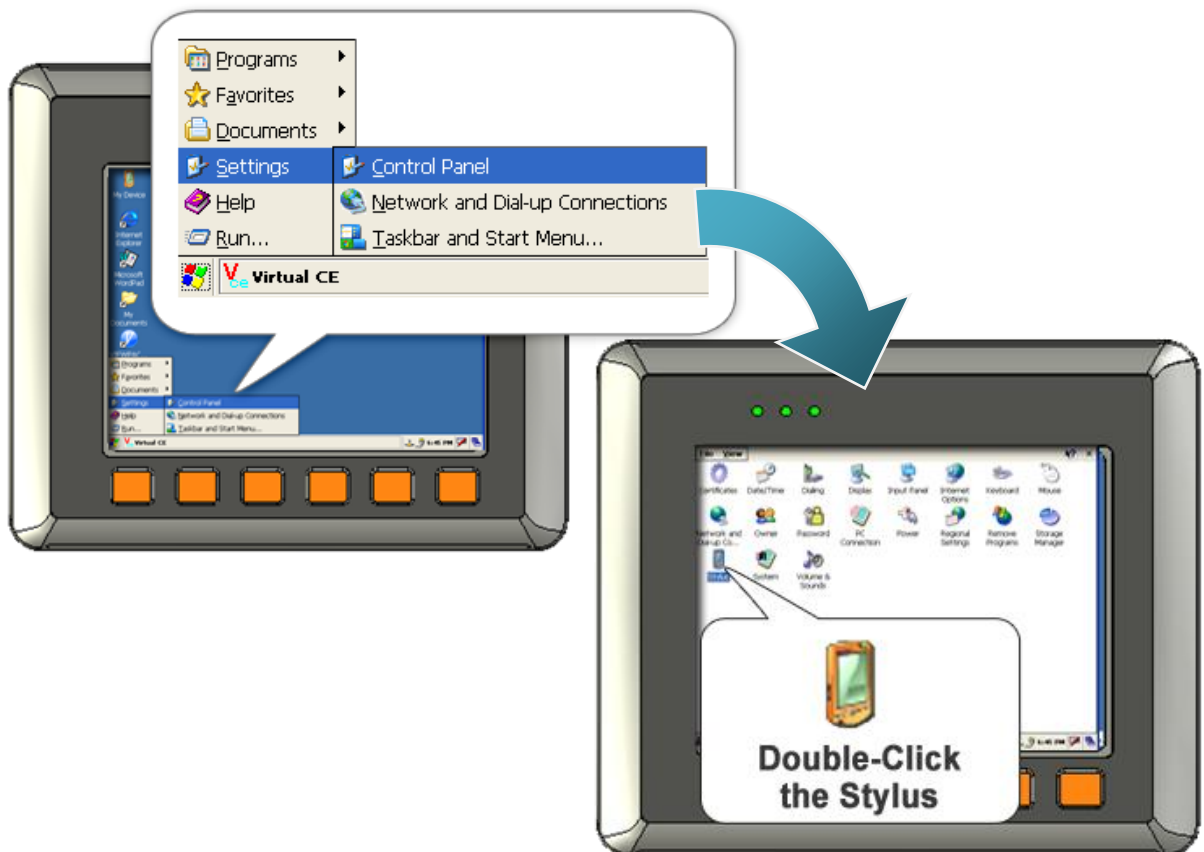
**Step 5: It will display a list of I-87K series expansion I/O modules, then select the module name that you want to configure**

module	Address	Baudrate	Unit	format	Status	Description
WinCon8000	101	115200	Device	N.8.1		WinPAC8000 System(DCON)
xxxxx	S0	115200	Disable			[Parallel bus module] or [None]
xxxxx	S1	115200	Disable			[Parallel bus module] or [None]
xxxxx	S2	115200	Disable			[Parallel bus module] or [None]
xxxxx	S3	115200	Disable			[Parallel bus module] or [None]
xxxxx	S4	115200	Disable			[Parallel bus module] or [None]
xxxxx	S5	115200	Disable			[Parallel bus module] or [None]
xxxxx	S6	115200	Disable			[Parallel bus module] or [None]
xxxxx	S7	115200	Disable			[Parallel bus module] or [None]

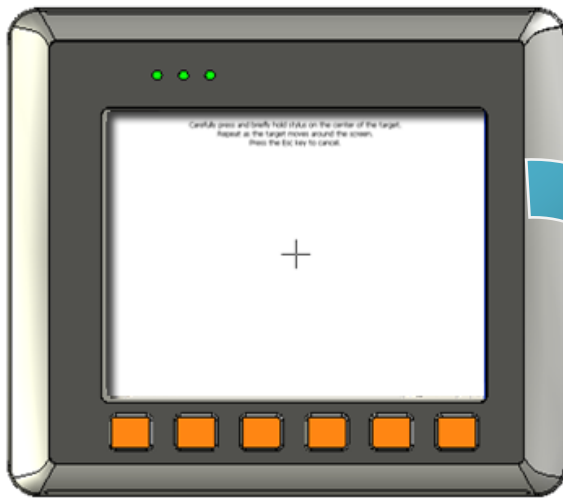
## 8 Recalibrate the touch screen

The touch screen has function with the default calibration. It is necessary to calibrate your screen when it works not precise.

**Step 1: Run the Stylus in the Control Panel**



**Step 2: Tap the touch pen in the exact center of each of the calibration markers ( + )**



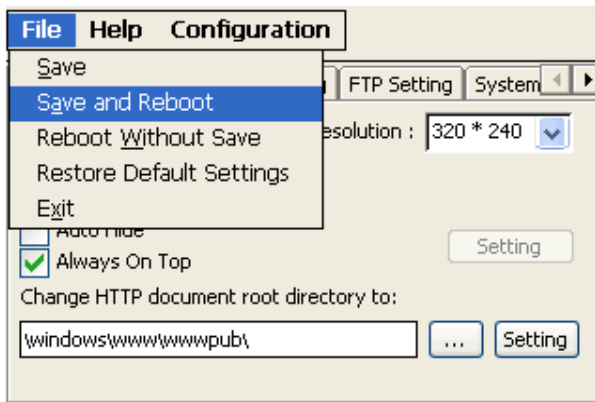
**Step 3: Touch the panel to finish the calibration program**

**Touch the panel to finish the calibration program**



ViewPAC Utility

**Step 4: Run the ViewPAC Utility to save the settings and reboot the View PAC**



**技術支援**

– **VP-25W1 User Manual**

CD:\NAPDOS\vp-2000\_ce50\Document\

[http://ftp.icpdas.com/pub/cd/winpac/napdos/vp-2000\\_ce50/document/](http://ftp.icpdas.com/pub/cd/winpac/napdos/vp-2000_ce50/document/)

– **VP-25W1 Demo Reference**

CD:\NAPDOS\vp-2000\_ce50\Demo\

[http://ftp.icpdas.com/pub/cd/winpac/napdos/vp-2000\\_ce50/demo/](http://ftp.icpdas.com/pub/cd/winpac/napdos/vp-2000_ce50/demo/)



– **View PAC Website**

<http://www.icpdas.com/products/PAC/viewpac/introduction.htm>

– **ICP DAS Website**

<http://www.icpdas.com/>